



**BettsHD<sup>®</sup>**

# **POPULAR PARTS GUIDE**



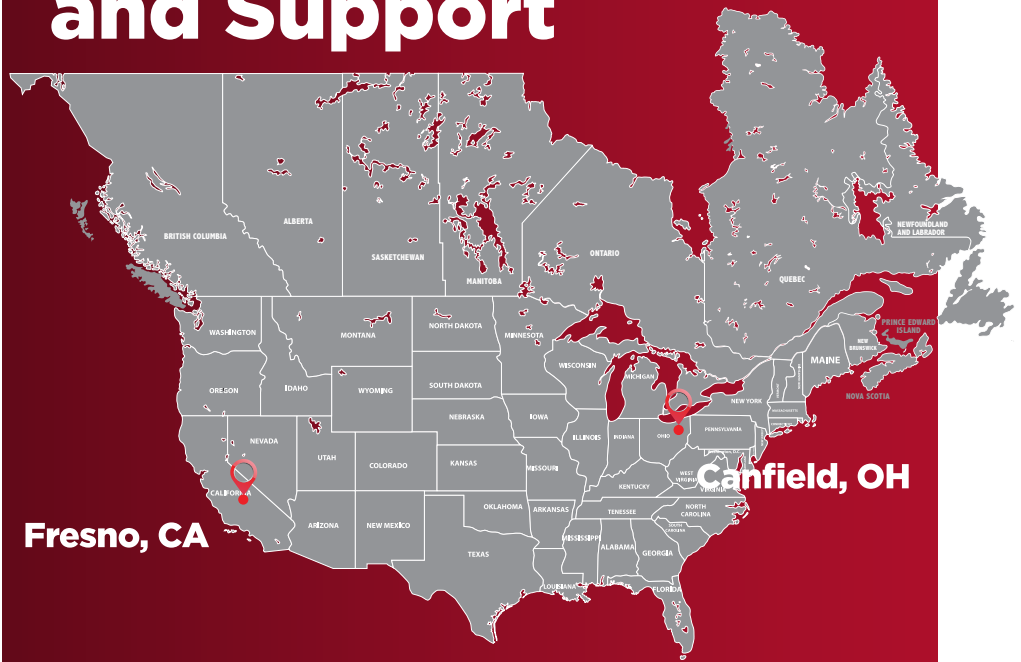
**YOUR #1 SOURCE FOR  
HEAVY DUTY  
TRUCK & TRAILER PRODUCTS**



# PARTS FOR THE LONG HAUL



# Parts, Service and Support



Fresno, CA

Canfield, OH

Two strategic manufacturing and stocking locations

## Supporting you in the marketplace and at the point of sale

BettsHD is your partner in profitability. We support the efforts of our distributors through print campaigns, POS signage, media relations and a robust website at [BettsHD.com](http://BettsHD.com).



# Ordering & Support

Contact BettsHD Customer Support for your product questions, to place an order, and to learn how to become a distributor of quality BettsHD parts.

Customer Support 559.226.9049

8:00 AM – 8:00 PM Eastern Time

[Customer.Support@BettsHD.com](mailto:Customer.Support@BettsHD.com)

Join Us On Social Media



# Reliability Quality Value



## Why BettsHD?

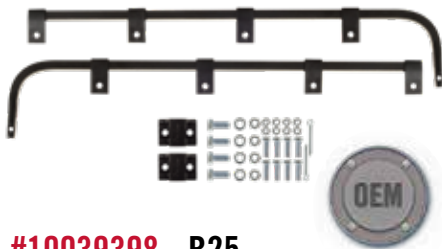
- ▶ 6 Product Categories - metal fenders, quarter fenders, poly fenders, mud flap hangers, conspicuity & accessories
- ▶ Exceptional 98% OTD
- ▶ Responsive customer service for all product questions
- ▶ Consolidate - Save time and money ordering from a single source
- ▶ Made in U.S.A. - American made quality and reliability
- ▶ First-Fit on OEM vehicles
- ▶ Patented the first Mud Flap Hanger in 1954

# BAR TYPE MUD FLAP HANGERS | STRAIGHT BAR



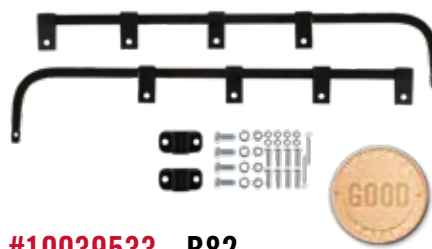
## #10039069 - A25RL

- **OUR BEST SELLING HANGER**
- Heavy duty .640" square spring steel
- Nominal length - 29.750"
- Weight: 4.586 lbs
- Unhanded design fits left or right
- Individual mud flap hanger



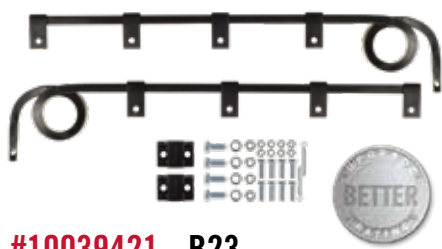
## #10039398 - B25

- Heavy duty .640" square spring steel
- Nominal length - 29.750"
- Unhanded design fits left or right
- Boxed kit contains two (2) #10039069 - A25RL hangers, two (2) #10038991 - B711 mounting brackets and all mounting hardware



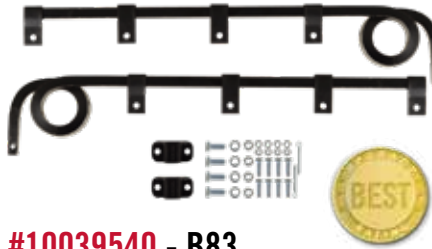
## #10039533 - B82

- Extra heavy duty .750" square spring steel
- Nominal length - 29.750"
- Unhanded design fits left or right
- Boxed kit contains two (2) #10039440 - A82RL hangers, two (2) #10038995 - B700 mounting brackets and all mounting hardware



## #10039421 - B23

- Heavy duty .640" square spring steel
- Nominal length - 29.750"
- Both left and right hand
- Boxed kit contains one (1) #10039130 - A23R and one (1) #10039128 - A23L hanger, two (2) #10038991 - B711 mounting brackets and all mounting hardware



## #10039540 - B83

- Extra heavy duty .750" square spring steel
- Nominal length - 29.750"
- Both left and right hand
- Boxed kit contains one (1) #10039480 - A83R and one (1) #10039479 - A83L hangers, two (2) #10038995 - B700 mounting brackets and all mounting hardware

## A25RL BULK DISPLAYS



## #10039257

### A25RLB40 BULK DISPLAY

POP display barrel contains 40 A25RL mud flap hangers.



## #10039263

### A25RLB90 BULK DISPLAY

POP display barrel contains 90 A25RL mud flap hangers.

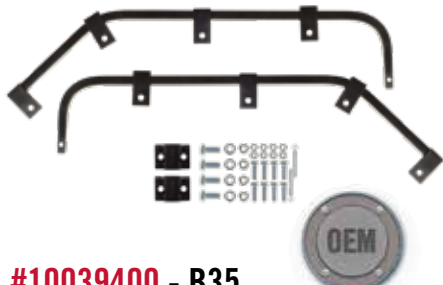


# BAR TYPE MUD FLAP HANGERS | ANGLED DOWN



**#10039071 - A35RL**

- Heavy duty .640" square spring steel
- Nominal length - 27.500"
- Unhanded design fits left or right
- Individual mud flap hanger



**#10039400 - B35**

- Heavy duty .640" square spring steel
- Nominal length - 27.500"
- Unhanded design fits left or right
- Boxed kit contains two (2) #10039071 - A35RL hangers, two (2) #10038991 - B711 mounting brackets and all mounting hardware



**#10039545 - B87**

- Extra heavy duty .750" square spring steel
- Nominal length - 30.500"
- Both left and right hand
- Boxed kit contains one (1) #10039503 - A87R and one (1) #10039504 - A87L hanger, two (2) #10038995 - B700 mounting brackets and all mounting hardware



**#10039539 - B84**

- Extra heavy duty .750" square spring steel
- Nominal length - 27.750"
- Both left and right hand
- Boxed kit contains one (1) #10039476 - A84R and one (1) #10039475 - A84L hangers, two (2) #10038995 - B700 mounting brackets and all mounting hardware



**#10039423 - B33**

- Heavy duty .640" square spring steel
- Nominal length - 27.625"
- Both left and right hand
- Boxed kit contains one (1) #10039127 - A33R and one (1) #10039126 - A33L hanger, two (2) #10038991 - B711 mounting brackets and all mounting hardware



**#10039532 - B81**

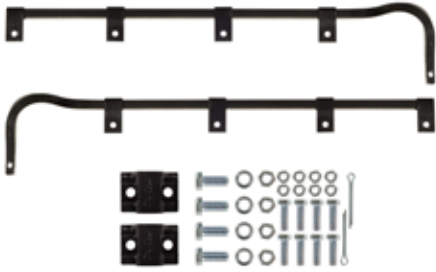
- Extra heavy duty .750" square spring steel
- Nominal length - 27.500"
- Unhanded design fits left or right
- Boxed kit contains two (2) #10039441 - A81RL hangers, two (2) #10038995 - B700 mounting brackets and all mounting hardware



**#10039546 - B88**

- Extra heavy duty .750" square spring steel
- Nominal length - 30.500"
- Both left and right hand
- Boxed kit contains one (1) #10039510 - A88R and one (1) #10039509 - A88L hangers, one (1) #10039005 - B750L and one (1) #10039006 - B750R mounting bracket and all mounting hardware

# OFFSET | BAR TYPE MUD FLAP HANGERS



## #10039405 - B29

- Offset - 5.500"
- Heavy duty .640" square spring steel
- Nominal length - 29.750"
- Both left and right hand
- Boxed kit contains one (1) #10039077 - A29R and one (1) #10039075 - A29L hanger, two (2) #10038991 - B711 mounting brackets and all mounting hardware



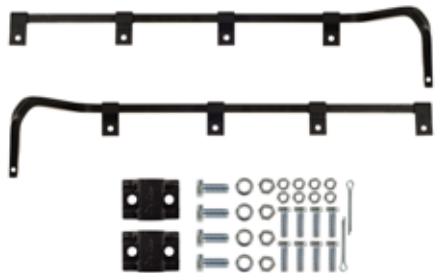
## #10039404 - B39

- Offset - 5.500"
- Heavy duty .640" square spring steel
- Nominal length - 27.625"
- Both left and right hand
- Boxed kit contains one (1) #10039084 - A39R and one (1) #10039083 - A39L hanger, two (2) #10038991 - B711 mounting brackets and all mounting hardware



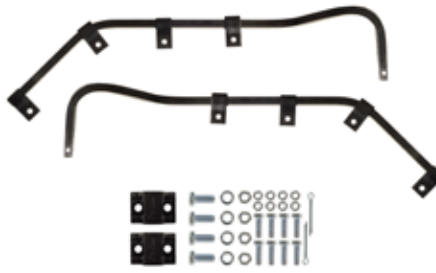
## #10039543 - B86

- Offset - 7.000"
- Extra heavy duty .750" square spring steel
- Nominal length - 25.750"
- Both left and right hand
- Boxed kit contains one (1) #10039489 - A86R and one (1) #10039487 - A86L hangers, two (2) #10038995 - B700 mounting brackets and all mounting hardware



## #10039408 - B69

- Offset 9.000"
- Heavy duty .640" square spring steel
- Nominal length - 29.750"
- Both left and right hand
- Boxed kit contains one (1) #10039096 - A69R and one (1) #10039095 - A69L hanger, two (2) #10038991 - B711 mounting brackets and all mounting hardware



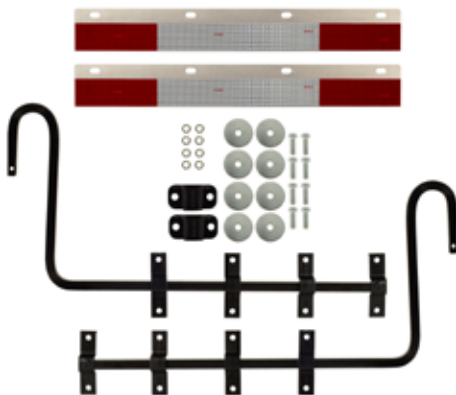
## #10039407 - B79

- Offset - 9.000"
- Heavy duty .640" square spring steel
- Nominal length - 27.625"
- Both left and right hand
- Boxed kit contains one (1) #10039094 - A79R and one (1) #10039093 - A79L hanger, two (2) #10038991 - B711 mounting brackets and all mounting hardware



## #10039534 - B90

- Offset: 12.000"
- Extra heavy duty .750" square spring steel
- Nominal length - 27.640"
- Both left and right hand
- Boxed kit contains one (1) #10039451 - A90R and one (1) #10039450 - A90L hangers, two (2) #10038995 - B700 mounting brackets and all mounting hardware



## #10039538 - B91

- Offset vertical 14.625"
- Heavy duty .750" square spring steel
- Nominal length - 29.750"
- Both left and right hand
- Boxed kit contains one (1) #10039474 - A91R and one (1) #10039472 - A91L hanger, two (2) #10038995 - B700 mounting brackets and all mounting hardware, and one skin card with two (2) #10038827 - RT25 conspicuity strips

## A35RL BULK DISPLAYS



### #10039258 A35RLB40 BULK DISPLAY

POP display barrel contains 40 A35RL mud flap hangers.



### #10039259 A35RLB80 BULK DISPLAY

POP display barrel contains 80 A35RL mud flap hangers.

## MUD FLAP HANGER BRACKETS



### #10038990 - B516P Mud Flap Mounting Kit POP Display

Counter display pail contains 50 individually packaged kits of bolts (5/16" x 1-1/4") nuts, and washers. Each kit installs one mud flap.



### #10039043 - B711P Bar Type Hanger Mounting Bracket POP Display

Black counter display pail contains 20 individual B711 mounting brackets



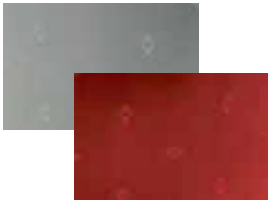
Item # - Smart Part #	Nominal Inside Dimension	Mounting Hole Centers	Mounting Orientation	Contents
#10039027 - B850	0.750"	3.313"	Vertical	Individual
#10039037 - K850	0.750"	3.313"	Vertical	Boxed Pair with hardware
#10038994 - B1732	0.640"	2.875"	Horizontal	Individual
#10039298 - K1732	0.640"	2.875"	Horizontal	Boxed Pair with hardware
#10038991 - B711	0.640"	1.875"	Horizontal	Individual
#10039297 - K711	0.640"	1.875"	Horizontal	Boxed Pair with hardware
#10038995 - B700	0.750"	2.875"	Horizontal	Individual
#10039301 - K700	0.750"	2.875"	Horizontal	Boxed Pair with hardware
#10039007 - B600L	0.640"	2.000"	Vertical	Individual
#10039010 - B600R	0.640"	2.000"	Vertical	Individual
#10039017 - B650	0.640"	3.313"	Vertical	Individual
#10039005 - B750L	0.750"	2.000"	Vertical	Individual
#10039006 - B750R	0.750"	2.000"	Vertical	Individual

Made from premium quality cast steel, one-piece construction.

# CONSPICUITY SOLUTIONS

DOT approved 2" x 150' conspicuity tape rolls provide increased reflectivity over standard reflective tape and are available in red and white, or standard white color options. We also offer our white or red white conspicuity tape with 3-year, 5-year or 10-year durability options.

## 3 YEAR DURABILITY



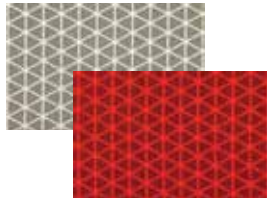
**#10039054 - RTR103**

Colors: 11" Red, 7" White

**#10039044 - RTR203**

Colors: 6" Red, 6" White

## 5 YEAR DURABILITY



**#10039058 - RTR105**

Colors: 11" Red, 7" White

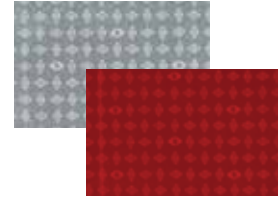
**#10039060 - RTR205**

Colors: 6" Red, 6" White

**#10039061 - RTR305**

Color: White

## 10 YEAR DURABILITY



**#10039059 - RTR110**

Colors: 11" Red, 7" White

**#10039047 - RTR210**

Colors: 6" Red, 6" White

**#10039048 - RTR310**

Color: White



**#10038827 - RT25**

Skin card display package contains two (2) **#10042836 - RT25RL** conspicuity strips for use with straight bar or spring loaded hangers. Unhanded design fits both left and right. Lightweight aluminum construction.

- Can be ordered individually, unpackaged (**#10042836 - RT25RL**)



**#10042836 - RT25RL**

Individual, unpackaged conspicuity strip for use with straight bar or spring loaded hangers. Unhanded design fits both left and right. Lightweight aluminum construction.



**#10038826 - RT35**

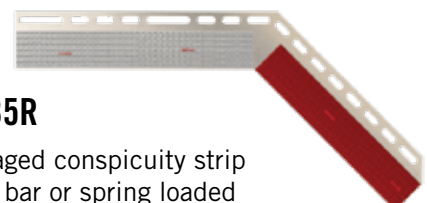
Skin card display packaging contains one (1) **#10038822 - RT35R** and one (1) **#10038821 - RT35L** conspicuity strip for use with angled bar or spring loaded hangers. Lightweight aluminum construction.

- Both left and right side
- Can be ordered individually, unpackaged (**#10038822 - RT35R** or **#10038821 - RT35L**)



**#10038821 - RT35L**

Individual, unpackaged conspicuity strip for use with angled bar or spring loaded hangers. Fits left side. Lightweight aluminum construction.



**#10038822 - RT35R**

Individual, unpackaged conspicuity strip for use with angled bar or spring loaded hangers. Fits right side. Lightweight aluminum construction.



# SPRING LOADED MUD FLAP HANGERS



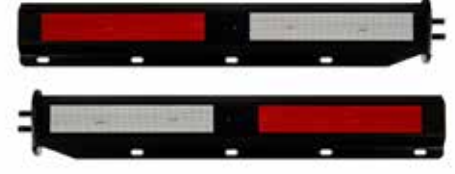
## #10039875 - B572825NTBK

- Mounting stud centers - 1.125"
- Nominal length - 28.250"
- Powder coated carbon steel
- Both left and right hand
- Boxed kit includes (1) LH and (1) RH hanger, stud nuts and mud flap mounting hardware



## #10040590 - B573025NTSK

- Mounting stud centers - 1.125"
- Nominal length - 30.250"
- Bright 430 stainless steel
- Both left and right hand
- Boxed kit includes (1) LH and (1) RH hanger, stud nuts and mud flap mounting hardware



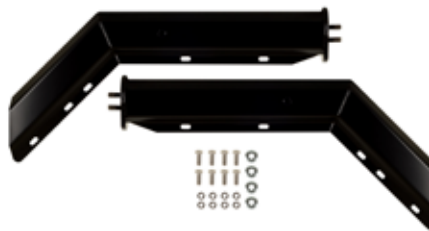
## #10039914 - B573025WTBK

- Mounting stud centers - 1.125"
- Nominal length - 30.250"
- Powder coated carbon steel
- Both left and right hand
- Boxed kit includes (1) LH and (1) RH hanger, stud nuts and mud flap mounting hardware



## #10039906 - B672625NTBK

- Mounting stud centers - 1.125"
- Nominal length - 26.250"
- Powder coated carbon steel
- Both left and right hand
- Boxed kit includes (1) LH and (1) RH hanger, stud nuts and mud flap mounting hardware



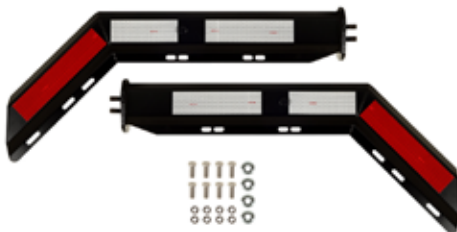
## #10039930 - B672825NTBK

- Mounting stud centers - 1.125"
- Nominal length - 28.250"
- Powder coated carbon steel
- Both left and right hand
- Boxed kit includes (1) LH and (1) RH hanger, stud nuts and mud flap mounting hardware



## #10039917 - B673025NTBK

- Mounting stud centers - 1.125"
- Nominal length - 30.250"
- Powder coated carbon steel
- Both left and right hand
- Boxed kit includes (1) LH and (1) RH hanger, stud nuts and mud flap mounting hardware



## #10039918 - B673025WTBK

- Mounting stud centers - 1.125"
- Nominal length - 30.250"
- Powder coated carbon steel
- Both left and right hand
- Boxed kit includes (1) LH and (1) RH hanger, stud nuts and mud flap mounting hardware



## #10039873 - B703000NTBK

- Mounting stud centers - 2.500"
- Nominal length - 30.000"
- Powder coated carbon steel
- Both left and right hand
- Boxed kit includes (1) LH and (1) RH hanger, stud nuts and mud flap mounting hardware



## #10040582 - B703000NTSK

- Mounting stud centers - 2.500"
- Nominal length - 30.000"
- Bright 430 stainless steel
- Both left and right hand
- Boxed kit includes (1) LH and (1) RH hanger, stud nuts and mud flap mounting hardware

# SINGLE ARM MUD FLAP HANGERS

Individual arms offer the flexibility of single hanger replacement. Single arm options are Unhanded and can be used as left or right.



## #10039732 - M673025NTBU

- Mounting stud centers - 1.125"
- Nominal length - 30.250"
- Powder coated carbon steel
- Unhanded design fits both left and right
- Boxed kit includes (1) Unhanded hanger, stud nuts and mud flap mounting hardware



## #10039995 - M703000NTSU

- Mounting stud centers - 2.500"
- Nominal length - 30.000"
- Bright 430 stainless steel
- Unhanded design fits both left and right
- Boxed kit includes (1) Unhanded hanger, stud nuts and mud flap mounting hardware

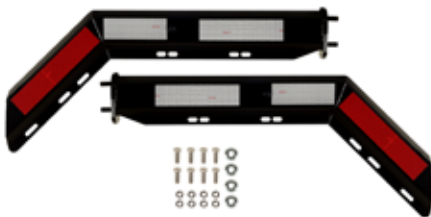


## #10039650 - M703000NTBU

- Mounting stud centers - 2.500"
- Nominal length - 30.000"
- Powder coated carbon steel
- Unhanded design fits both left and right
- Boxed kit includes (1) Unhanded hanger, stud nuts and mud flap mounting hardware

## OPTIONAL STUD SPACING

Optional stud spacing offers solutions for all popular mounting hole options. Our most popular styles are available with alternate stud spacing.



## #10039923 - B683025WTBK

- Mounting stud centers - 2.500"
- Nominal length - 30.250"
- Powder coated carbon steel
- Both left and right hand
- Boxed kit includes (1) LH and (1) RH hanger, stud nuts and mud flap mounting hardware



## #10040585 - B713000NTSK

- Mounting stud centers - 1.125"
- Nominal length - 30.000"
- Bright 430 stainless steel
- Both left and right hand
- Boxed kit includes (1) LH and (1) RH hanger, stud nuts and mud flap mounting hardware

## Smart™ Part Numbering System

See page 29 to use our unique Smart™ Part numbering system to determine the appropriate part number for your application.

Visit [BettsHD.com](http://BettsHD.com) to view all spring loaded hanger options



### Open Wound Coil Spring

Our proprietary, corrosion-resistant spring within every BettsHD spring loaded mud flap hanger delivers unrivaled spring yield performance for quick mud flap recentering and recovery.



### Integrated Self-Centering Tombstone

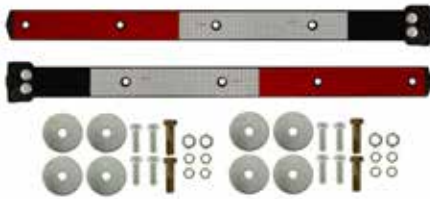
Corrosion-resistant self-centering tombstone works with our open wound coil spring to provide maximum horizontal deflection, protecting your frame and hanger in the event of a collision.

# DIRECTFLEX® MUD FLAP RETENTION SYSTEM

In 1999, BettsHD introduced DirectFlex® Mud Flap Retention System - the only patented mud flap retention system on the market. With no moving components, the system is nearly maintenance free. **Three black powder coated mounting bracket options** accommodate all popular installation configurations.

DirectFlex® Mud Flap Retention System is compatible with standard mud flaps and ChannelFlap™ mud flaps.

## DIRECTFLEX® STRAIGHT ARM



#10038969 - DF25PB901



#10038977 - DF25PB931



#10038979 - DF25PB941

Overall Length	Mounting Centers	Mounting Orientation	Handedness	Packaging	Item # - Kit Smart Part Number
25.00"	1.12" / 1.18" / 2.50" / 3.31"	Vertical	Both	Boxed - Kit	#10038971 - DF2525G-941
30.25"	1.12" / 1.18" / 2.50" / 3.31"	Vertical	Both	Boxed - Kit	#10038979 - DF25PB-941
30.25"	1.88"	Horizontal	Both	Boxed - Kit	#10038969 - DF25PB-901
30.25"	2.88"	Horizontal	Both	Boxed - Kit	#10038977 - DF25PB-931
29.00"	2.88"	Horizontal	Both	Boxed - Kit	#10038973 - DF2529PB-931
29.00"	1.12" / 1.18" / 2.50" / 3.31"	Vertical	Both	Boxed - Kit	#10038975 - DF2529PB-941
25.00"	1.12" / 1.18" / 2.50" / 3.31"	Vertical	Unhanded	Boxed - Individual	#10038950 - DM2525G-941
30.25"	1.88"	Horizontal	Unhanded	Boxed - Individual	#10038952 - DM25PB-901
30.25"	2.88"	Horizontal	Unhanded	Boxed - Individual	#10038953 - DM25PB-931
30.25"	1.12" / 1.18" / 2.50" / 3.31"	Vertical	Unhanded	Boxed - Individual	#10038955 - DM25PB-941

G = Galvanized Version PB = Powder Coated Black Version

## The DirectFlex® Solution

Visit [Resources](http://Resources.BettsHD.com) on [BettsHD.com](http://BettsHD.com) to watch DirectFlex® installation and performance videos.



## STRAIGHT CHANNELFLAP™



#10038816  
CF25RL30PB

- Straight / full width
- 30" long
- Unhanded design
- Individual mud flap

The ChannelFlap™ heavy-duty poly mud flap encapsulates the DirectFlex™ hanger. The compression fit between the components results in a minimum **3X stronger** connection when compared to any traditional mud flap and mud flap hanger combination.

# DIRECTFLEX® MUD FLAP RETENTION SYSTEM

## DIRECTFLEX® ANGLED ARM



#10038965 - DF3526PB901



#10038966 - DF3526PB931



#10038967 - DF3526PB941

Overall Length	Mounting Centers	Mounting Orientation	Handedness	Packaging	Item # - Kit Part Number
26.00"	1.12" / 1.18" / 2.50" / 3.31"	Vertical	Both	Boxed - Kit	#10038967 - DF3526PB-941
26.00"	1.88"	Horizontal	Both	Boxed - Kit	#10038965 - DF3526PB-901
26.00"	2.88"	Horizontal	Both	Boxed - Kit	#10038966 - DF3526PB-931
26.00"	1.88"	Horizontal	Left Hand	Boxed - Individual	#10044454 - DM3526LPB-901
26.00"	2.88"	Horizontal	Left Hand	Boxed - Individual	#10038949 - DM3526LPB-931
26.00"	1.12" / 1.18" / 2.50" / 3.31"	Vertical	Left Hand	Boxed - Individual	#10038945 - DM3526LPB-941
26.00"	1.88"	Horizontal	Right Hand	Boxed - Individual	#10038948 - DM3526RPB-901
26.00"	2.88"	Horizontal	Right Hand	Boxed - Individual	#10038946 - DM3526RPB-931
26.00"	1.12" / 1.18" / 2.50" / 3.31"	Vertical	Right Hand	Boxed - Individual	#10038947 - DM3526RPB-941

## DIRECTFLEX® MOUNTING BRACKETS

See **Kit Part Number** in Straight and Angled charts to reference mounting bracket configuration for DirectFlex® kits.



#10038948  
DM3526PRB-901



#10038946  
DM3526PRB-931



#10038947  
DM3526PRB-941

## ANGLED CHANNELFLAP™



#10038810  
CF3526LH24PB

- Angled / corner cut
- 24" long
- Left hand
- Individual mud flap



#10038811  
CF3526RH24PB

- Angled / corner cut
- 24" long
- Right hand
- Individual mud flap



#10038812  
CF3526LH30PB

- Angled / corner cut
- 30" long
- Left hand
- Individual mud flap



#10038813  
CF3526RH30PB

- Angled / corner cut
- 30" long
- Right hand
- Individual mud flap

# TRAILER MUD FLAP RETENTION SYSTEM (TMF-RS)



**GO FROM THIS...**



**TO THIS...**



**OR THIS...**

**Virtually ELIMINATE trailer mud flap loss**

**Install & repair with common hand tools**

**NO MORE WELDING - Makes roadside or driver repair possible**

**#10038986**

**TRSD10NT**

**Trailer Mud Flap Retention System with DirectFlex®**

Conspicuity: Without  
Slider Width: 48"  
Handedness: Pair  
Durability: Severe Duty Premium



**#10038987**

**TRSD10WT**

**Trailer Mud Flap Retention System with DirectFlex®**

Conspicuity: With  
Slider Width: 48"  
Handedness: Pair  
Durability: Severe Duty Premium



**#10039852**

**TRSB10NT**

**Trailer Mud Flap Retention System Spring Loaded Hangers**

Conspicuity: Without  
Slider Width: 48"  
Handedness: Pair  
Durability: Heavy Duty Standard



**#10039854**

**TRSB10WT**

**Trailer Mud Flap Retention System Spring Loaded Hangers**

Conspicuity: With  
Slider Width: 48"  
Handedness: Pair  
Durability: Heavy Duty Standard



“True to the claims, TMF-RS, with its specially designed mounting bracket, has our fleet of trailers looking top notch and in compliance.

Gone are the days of bent angle iron or missing mud flaps. BettsHD and TMF-RS will be a mainstay here at Charlie's Produce.”

Ian L. - Charlie's Produce Fleet Maintenance Manager



Watch TMF-RS in action at [BettsHD.com](http://BettsHD.com)

# POLY QUARTER FENDERS



**#10040807 - PS211PA2**  
STANDARD MOUNT PAIR



**#10040804 - PS221PA2**  
LOW MOUNT PAIR



**#10040815 - PS211PA5**    **#10040797 - PS211PA6**  
STANDARD MOUNT RIGHT SIDE    STANDARD MOUNT LEFT SIDE



**#10040816 - PS221PA5**    **#10040817 - PS221PA6**  
LOW MOUNT RIGHT SIDE    LOW MOUNT LEFT SIDE

<b>Material</b>	Black UV resistant poly panel
<b>Mounting Tube</b>	Black, e-coat, 18-gauge carbon steel mounting tube
<b>Clamp</b>	AccuSeal™ aluminized carbon steel tube clamp
<b>Includes</b>	Black poly top flat with zinc plated steel top flap hardware
<b>Packaging</b>	Assembled box kit, includes tube mounting clamps, top flaps and top flap mounting hardware

## QUARTER FENDER ACCESSORIES

**#10040553**  
**X2900 MOUNTING POST**

Eight inches (8") long single bolt post. Individually packaged.



**ACCUSEAL™ CLAMPS**

- **#10040471 - 400118-00** aluminized version for galvanized mounting tubes
- **#10040472 - 400118-01** stainless steel version for stainless steel mounting tubes



**#10040471**  
**400118-00**



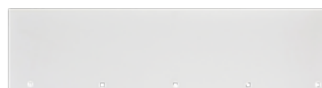
**#10040472**  
**400118-01**



**#10040535**  
**100109-00 BLACK RUBBER**



**#10040544**  
**100144-00 BLACK POLY**



**#10040545**  
**100145-00 WHITE POLY**



**LOGO TOP FLAPS**

Custom logos available; minimum quantity applies.

# STAINLESS STEEL QUARTER FENDERS



**#10040775 - SS211PA2**  
STANDARD MOUNT PAIR



**#10040518 - SS221PA2**  
LOW MOUNT PAIR



**#10040823 - SS211PA5**  
STANDARD MOUNT  
RIGHT SIDE

**#10040824 - SS211PA6**  
STANDARD MOUNT  
LEFT SIDE



**#10040825 - SS221PA5**  
LOW MOUNT  
RIGHT SIDE

**#10040826 - SS221PA6**  
LOW MOUNT  
LEFT SIDE



**#10040779 - SS241PA2**  
ULTRA LOW MOUNT PAIR



**#10040715 - SS241PA5**  
ULTRA LOW MOUNT  
RIGHT SIDE

**#10040716 - SS241PA6**  
ULTRA LOW MOUNT  
LEFT SIDE

<b>Material</b>	Bright 430 18-gauge stainless steel
<b>Mounting Tube</b>	18-gauge stainless steel with black plastic end caps
<b>Clamp</b>	AccuSeal™ stainless steel tube clamp
<b>Includes</b>	Black poly top flat with stainless steel top flap hardware
<b>Packaging</b>	Assembled box kit, includes tube mounting clamps, top flaps and top flap mounting hardware

# POLY FENDERS

## SINGLE AXLE

### #10039432 - USP635

<b>Material</b>	Black high density UV resistant poly
<b>Style</b>	3-Rib Up with radiused edge
<b>Overall Length</b>	69"
<b>Width</b>	25"
<b>Fender Opening</b>	48"
<b>Wheel Size</b>	22.5"
<b>Application</b>	Dual wheels



### #10039632 - USP635RED

<b>Material</b>	Red high density UV resistant poly
<b>Style</b>	3-Rib Up with radiused edge
<b>Overall Length</b>	69"
<b>Width</b>	25"
<b>Fender Opening</b>	48"
<b>Wheel Size</b>	22.5"
<b>Application</b>	Dual wheels



### #10039658 - USP670

<b>Material</b>	Black high density UV resistant poly
<b>Style</b>	3-Rib Up with radiused edge
<b>Overall Length</b>	77.5"
<b>Width</b>	26.5"
<b>Fender Opening</b>	51"
<b>Wheel Size</b>	22.5"
<b>Application</b>	Dual wheels





## HALF TANDEM AXLE

### #10039699 - USP650HT-VF

<b>Material</b>	Black high density UV resistant poly
<b>Style</b>	3-Rib Up with radiused edge
<b>Overall Length</b>	54.75"
<b>Width</b>	25"
<b>Height</b>	16"
<b>Wheel Size</b>	22.5" and 24.5"
<b>Application</b>	Dual wheels



### #10039694 - USP25HT

<b>Material</b>	Black high density UV resistant poly
<b>Style</b>	3-Rib Up with radiused edge
<b>Overall Length</b>	67"
<b>Width</b>	25"
<b>Height</b>	25.5"
<b>Wheel Size</b>	22.5" and 24.5"
<b>Application</b>	Dual wheels



## BRACKET SUPPORT KIT

### #10040459 - HTE100

<b>2 - Riser Plates</b>
<b>4 - 1-5/8" Clamps</b>
<b>2 - Balota Anti-Vibration Washers</b>
<b>Mounting Hardware</b>



# POLY FENDERS

## REFUSE FENDERS



### #10039688 - USP25WRT

<b>Material</b>	Black high density UV resistant poly
<b>Style</b>	3-Rib Up with radiused edge
<b>Overall Length</b>	69"
<b>Width</b>	25"
<b>Fender Opening</b>	48"
<b>Wheel Size</b>	22.5"
<b>Application</b>	Dual wheels



### #10039638 - USP25WCT

<b>Material</b>	Black high density UV resistant poly
<b>Style</b>	3-Rib Up with radiused edge
<b>Overall Length</b>	50"
<b>Width</b>	25"
<b>Fender Opening</b>	38"
<b>Wheel Size</b>	22.5"
<b>Application</b>	Dual wheels



### #10038834 - USP25WPT

<b>Material</b>	Black high density UV resistant poly
<b>Style</b>	Joint cover plate
<b>Overall Length</b>	5 3/4"
<b>Width</b>	25"



## LIFT AXLE FENDER

### #10039022 - USP320

Material	Black high density UV resistant poly
Style	Radiused edge
Overall Length	60.5"
Fender Opening	42"
Width	12.5"
Wheel Size	22.5"
Application	Lift axle fender



## MOUNTING HARDWARE

### FIXING BRACKETS



### #10040456 - IT42-4

4 - 1-5/8" IT Brackets

4 - IT Backing Plates

Mounting Hardware



### #10040458 - IT42HD-4

4 - 1-5/8" Heavy Duty IT Brackets

4 - IT Backing Plates

Mounting Hardware

### MOUNTING TUBES



### #10040466 - FK-02

Material Stainless Steel Mounting Tube

Style Offset, Single Bolt

Overall Length 30"

Tube Width 1-5/8"



### #10040466 - FK-03

Material Stainless Steel Mounting Tube

Style Offset, Single Bolt

Overall Length 30"

Tube Width 1-5/8"

## SINGLE AXLE

### #10039412 - SR200-80-1

<b>Material</b>	Bright 430 18 gauge stainless steel
<b>Style</b>	4-Rib with beaded edge
<b>Overall Length</b>	80"
<b>Fender Opening</b>	50"
<b>Wheel Size</b>	22.5" and 24.5"
<b>Application</b>	Dual wheels
<b>Packaging</b>	Cardboard wrapped individual fender
<b>Mounting Kits (Not Included)</b>	#10040356 - H3362PS, individual fender #10040368 - K2362PS, fender pair
<b>Additional Options</b>	60" overall length Galvanized carbon steel or aluminum



#10039412 - SR200-80-1

## HALF TANDEM AXLE

### #10039392 - SR300-66-1

<b>Material</b>	Bright 430 18 gauge stainless steel
<b>Style</b>	4-Rib with beaded edge
<b>Overall Length</b>	66"
<b>Front Curve</b>	39"
<b>Flat Section</b>	27"
<b>Fender Opening</b>	57"
<b>Wheel Size</b>	22.5" and 24.5"
<b>Application</b>	Dual wheels
<b>Packaging</b>	Cardboard wrapped individual fender with #10038895 - SF100H-1 rubber vibration isolator
<b>Mounting Kits (Not Included)</b>	#10040356 - H3362PS, individual fender #10040403 - K3362PS, fender pair
<b>Additional Options</b>	60" and 80" overall lengths Galvanized carbon steel or aluminum



#10039392 - SR300-66-1

# FULL TANDEM AXLE

## #10039644 - SR400-132-1

<b>Material</b>	Bright 430 18 gauge stainless steel
<b>Style</b>	4-Rib with beaded edge
<b>Overall Length</b>	132"
<b>Front Curve</b>	39"
<b>Rear Curve</b>	39"
<b>Flat Section</b>	54"
<b>Fender Opening</b>	105"
<b>Wheel Size</b>	22.5" and 24.5"
<b>Application</b>	Dual wheels
<b>Packaging</b>	Cardboard wrapped individual fender with #10038895 - SF100H-1 rubber vibration isolator
<b>Mounting Kits (Not Included)</b>	#10040353 - H4362PS, individual fender #10040406 - K4362PS, fender pair
<b>Additional Options</b>	105", 120" and 126" overall lengths Galvanized carbon steel or aluminum



#10039644 - SR400-132-1

## MOUNTING KITS



#10040368  
K2362PS



#10040403  
K3362PS



#10040406  
K4362PS



#10040328  
B900S



#10040304  
T362PS

Mounting Kit	Center Mounts	Tubes / Caps	Hardware
#10040368 K2362PS	N/A	<ul style="list-style-type: none"> <li>Four (4) #10040304 - T362PS single-bolt frame mount, 30" predrilled Stainless Steel tubes</li> <li>Four (4) #10038930 - CP12 poly end caps</li> </ul>	Four (4) #10038893 - B4HS-1 stainless steel carriage bolt kits: each contains five (5) carriage bolts, nuts, flat and lock washers
#10040403 K3362PS	Two (2) #10040328 - B900S single-bolt frame mounts, .625" through-hole with 3½" vertical adjustability	<ul style="list-style-type: none"> <li>Two (2) #10040304 - T362PS single-bolt frame mounts, 30" predrilled Stainless Steel tubes</li> <li>Two (2) #10038930 - CP12 poly end caps</li> </ul>	Four (4) #10038893 - B4HS-1 stainless steel carriage bolt kits: each contains five (5) carriage bolts, nuts, flat and lock washers
#10040406 K4362PS	Two (2) #10040328 - B900S single-bolt frame mounts, .625" through-hole with 3½" vertical adjustability	<ul style="list-style-type: none"> <li>Four (4) #10040304 - T362PS single-bolt frame mounts, 30" predrilled Stainless Steel tubes</li> <li>Four (4) #10038930 - CP12 poly end caps</li> </ul>	Six (6) #10038893 - B4HS-1 stainless steel carriage bolt kits: each contains five (5) carriage bolts, nuts, flat and lock washers
#10040328 B900S	<ul style="list-style-type: none"> <li>Single-bolt frame mount, .625" through-hole with 3½" vertical adjustability.</li> <li>Unhanded - Fits right or left</li> </ul>	N/A	One (1) #10038893 - B4HS-1 stainless steel carriage bolt kit: each contains five (5) carriage bolts, nuts, flat and lock washers
#10040304 T362PS	N/A	<ul style="list-style-type: none"> <li>Single-bolt frame mount, 30" predrilled Stainless Steel tube</li> <li>#10038930 - CP12 poly end cap</li> </ul>	One (1) #10038893 - B4HS-1 stainless steel carriage bolt kit: each contains five (5) carriage bolts, nuts, flat and lock washers

# METAL FENDERS | 2 RIB STAINLESS STEEL

## SINGLE AXLE

### #10040031 - SR200-80NL-1

<b>Material</b>	Bright 430 18 gauge stainless steel
<b>Style</b>	2-Rib with beaded edge
<b>Overall Length</b>	80"
<b>Fender Opening</b>	50"
<b>Wheel Size</b>	22.5" and 24.5"
<b>Application</b>	Dual wheels
<b>Packaging</b>	Cardboard wrapped individual fender
<b>Mounting Kits (Not Included)</b>	#10040340 - H2362PS, individual fender #10040368 - K2362PS, fender pair
<b>Additional Options</b>	60" overall length Galvanized carbon steel



#10040031 - SR200-80NL-1

## HALF TANDEM AXLE

### #10040030 - SR300-66NL-1

<b>Material</b>	Bright 430 18 gauge stainless steel
<b>Style</b>	2-Rib with beaded edge
<b>Overall Length</b>	66"
<b>Front Curve</b>	39"
<b>Flat Section</b>	27"
<b>Fender Opening</b>	57"
<b>Wheel Size</b>	22.5" and 24.5"
<b>Application</b>	Dual wheels
<b>Packaging</b>	Cardboard wrapped individual fender with #10038895 - SF100H-1 rubber vibration isolator
<b>Mounting Kits (Not Included)</b>	#10040356 - H3362PS, individual fender #10040403 - K3362PS, fender pair
<b>Additional Options</b>	60" and 80" overall lengths Galvanized carbon steel



#10040030 - SR300-66NL-1

# FULL TANDEM AXLE

## #10040071 - SR400-132NL-1

<b>Material</b>	Bright 430 18 gauge stainless steel
<b>Style</b>	2-Rib with beaded edge
<b>Overall Length</b>	126"
<b>Front Curve</b>	39"
<b>Rear Curve</b>	39"
<b>Flat Section</b>	54"
<b>Fender Opening</b>	104"
<b>Wheel Size</b>	22.5" and 24.5"
<b>Application</b>	Dual wheels
<b>Packaging</b>	Cardboard wrapped individual fender with #10038895 - SF100H-1 rubber vibration isolator
<b>Mounting Kits (Not Included)</b>	#10040353 - H4362PS, individual fender #10040406 - K4362PS, fender pair
<b>Additional Options</b>	105", 120" and 126" overall lengths Galvanized carbon steel



#10040071 - SR400-132NL-1

## MOUNTING KITS



#10040368  
K2362PS



#10040403  
K3362PS



#10040406  
K4362PS



#10040328  
B900S



#10040304  
T362PS

Mounting Kit	Center Mounts	Tubes / Caps	Hardware
#10040368 K2362PS	N/A	<ul style="list-style-type: none"> <li>Four (4) #10040304 - T362PS single-bolt frame mount, 30" predrilled Stainless Steel tubes</li> <li>Four (4) #10038930 - CP12 poly end caps</li> </ul>	Four (4) #10038893 - B4HS-1 stainless steel carriage bolt kits: each contains five (5) carriage bolts, nuts, flat and lock washers
#10040403 K3362PS	Two (2) #10040328 - B900S single-bolt frame mounts, .625" through-hole with 3½" vertical adjustability	<ul style="list-style-type: none"> <li>Two (2) #10040304 - T362PS single-bolt frame mounts, 30" predrilled Stainless Steel tubes</li> <li>Two (2) #10038930 - CP12 poly end caps</li> </ul>	Four (4) #10038893 - B4HS-1 stainless steel carriage bolt kits: each contains five (5) carriage bolts, nuts, flat and lock washers
#10040406 K4362PS	Two (2) #10040328 - B900S single-bolt frame mounts, .625" through-hole with 3½" vertical adjustability	<ul style="list-style-type: none"> <li>Four (4) #10040304 - T362PS single-bolt frame mounts, 30" predrilled Stainless Steel tubes</li> <li>Four (4) #10038930 - CP12 poly end caps</li> </ul>	Six (6) #10038893 - B4HS-1 stainless steel carriage bolt kits: each contains five (5) carriage bolts, nuts, flat and lock washers
#10040328 B900S	<ul style="list-style-type: none"> <li>Single-bolt frame mount, .625" through-hole with 3½" vertical adjustability.</li> <li>Unhanded - Fits right or left</li> </ul>	N/A	One (1) #10038893 - B4HS-1 stainless steel carriage bolt kit: each contains five (5) carriage bolts, nuts, flat and lock washers
#10040304 T362PS	N/A	<ul style="list-style-type: none"> <li>Single-bolt frame mount, 30" predrilled Stainless Steel tube</li> <li>#10038930 - CP12 poly end cap</li> </ul>	One (1) #10038893 - B4HS-1 stainless steel carriage bolt kit: each contains five (5) carriage bolts, nuts, flat and lock washers

# METAL FENDERS | SMOOTH STAINLESS STEEL

## SINGLE AXLE

### #10039009 - TSA8000000

<b>Material</b>	Bright 430 16 gauge stainless steel
<b>Style</b>	Smooth with radiused edge
<b>Overall Length</b>	80"
<b>Fender Opening</b>	50"
<b>Wheel Size</b>	22.5" and 24.5"
<b>Application</b>	Dual wheels
<b>Packaging</b>	Cardboard wrapped individual fender
<b>Mounting Kits (Not Included)</b>	#10040352 - L200TS-1, individual fender #10040392 - L200TS, fender pair



#10039009 - TSA8000000

## HALF TANDEM AXLE

### #10039008 - TSB3902700

<b>Material</b>	Bright 430 16 gauge stainless steel
<b>Style</b>	Smooth with radiused edge
<b>Overall Length</b>	66"
<b>Front Curve</b>	39"
<b>Flat Section</b>	27"
<b>Fender Opening</b>	51"
<b>Wheel Size</b>	22.5" and 24.5"
<b>Application</b>	Dual wheels
<b>Packaging</b>	Cardboard wrapped individual fender with #10038901 - SF200H-1 rubber vibration isolator
<b>Mounting Kits (Not Included)</b>	#10040413 - U300TS-1, individual fender #10040413 - U300TS, fender pair
<b>Additional Options</b>	66" overall length with 35" front curve and 31" flat section



#10039008 - TSB3902700

## SPECIALTY FENDERS

Visit [BettsHD.com](http://BettsHD.com) for smooth stainless steel specialty fenders.



#10039013 - TS80100141



#10039012 - TS80100139



# FULL TANDEM AXLE

## #10039016 - TSC3905439

<b>Material</b>	Bright 430 16 gauge stainless steel
<b>Style</b>	Smooth with radiused edge
<b>Overall Length</b>	132"
<b>Front Curve</b>	39"
<b>Rear Curve</b>	39"
<b>Flat Section</b>	54"
<b>Fender Opening</b>	105"
<b>Wheel Size</b>	22.5" and 24.5"
<b>Application</b>	Dual wheels
<b>Packaging</b>	Cardboard wrapped individual fender with #10038901 - SF200H-1 rubber vibration isolator
<b>Mounting Kits (Not Included)</b>	#10040386 - U400TS-1, individual fender #10040414 - U400TS, fender pair
<b>Additional Options</b>	120" overall length



#10039016 - TSC3905439

## MOUNTING KITS



#10040392 - L200TS



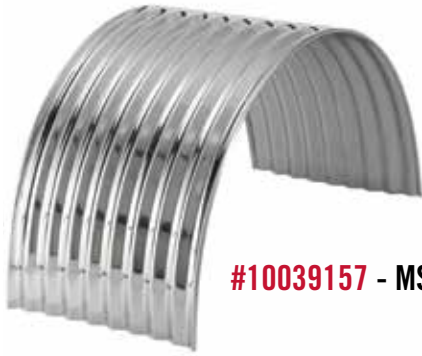
#10040412 - U300TS



#10040414 - U400TS

Mounting Kit	Mounts / Posts	Tubes / Caps / Clamps	Bolt Kit
<b>#10040392</b> L200TS	<ul style="list-style-type: none"> <li>Four (4) #10040553 - X2900 single-bolt posts</li> </ul>	<ul style="list-style-type: none"> <li>Four (4) #10040280 - B610TS stainless steel paddle brackets</li> <li>Four (4) #10040472 - 400118-01 AccuSeal stainless steel clamps</li> </ul>	<ul style="list-style-type: none"> <li>Four (4) #10038894 - TS100H-1 hardware kits: each kit contains three (3) strap plates, six (6) cap screws and six (6) flat washers</li> </ul>
<b>#10040412</b> U300TS	<ul style="list-style-type: none"> <li>Two (2) #10040328 - B900S single-bolt frame mounts, .625" through-hole with 3-1/2" vertical adjustability</li> <li>Two (2) #10040553 - X2900 single-bolt posts</li> </ul>	<ul style="list-style-type: none"> <li>Two (2) #10040280 - B610TS stainless steel paddle brackets</li> <li>Two (2) #10040472 - 400118-01 AccuSeal stainless steel clamps</li> </ul>	<ul style="list-style-type: none"> <li>Two (2) #10038894 - TS100H-1 hardware kits: each kit contains three (3) strap plates, six (6) cap screws and six (6) flat washers</li> <li>Two (2) #10038893 - B4HS-1 stainless steel carriage bolt kits: each contains five (5) carriage bolts, nuts, flat and lock washers</li> </ul>
<b>#10040414</b> U400TS	<ul style="list-style-type: none"> <li>Two (2) #10040328 - B900S single-bolt frame mounts, .625" through-hole with 3-1/2" vertical adjustability</li> <li>Four (4) #10040553 - X2900 single-bolt posts</li> </ul>	<ul style="list-style-type: none"> <li>Four (4) #10040280 - B610TS stainless steel paddle brackets</li> <li>Four (4) #10040472 - 400118-01 AccuSeal stainless steel clamps</li> </ul>	<ul style="list-style-type: none"> <li>Four (4) #10038894 - TS100H-1 hardware kits: each kit contains three (3) strap plates, six (6) cap screws and six (6) flat washers</li> <li>Two (2) #10038893 - B4HS-1 stainless steel carriage bolt kits: each contains five (5) carriage bolts, nuts, flat and lock washers</li> </ul>

# METAL FENDERS | STAINLESS STEEL CORRUGATED



#10039157 - MS3200-80-1



#10039151 - MS300-66-1

## SINGLE AXLE

### #10039157 - MS200-80-1

<b>Material</b>	Bright 430 18 gauge stainless steel
<b>Style</b>	Corrugated
<b>Overall Length</b>	80"
<b>Fender Opening</b>	50"
<b>Wheel Size</b>	22.5" and 24.5"
<b>Application</b>	Dual wheels
<b>Packaging</b>	Cardboard wrapped individual fender
<b>Mounting Kits (Not Included)</b>	#10040337 - K2362US, individual fender #10040369 - K2362US, fender pair
<b>Additional Options</b>	60" overall length Galvanized carbon steel

## HALF TANDEM AXLE

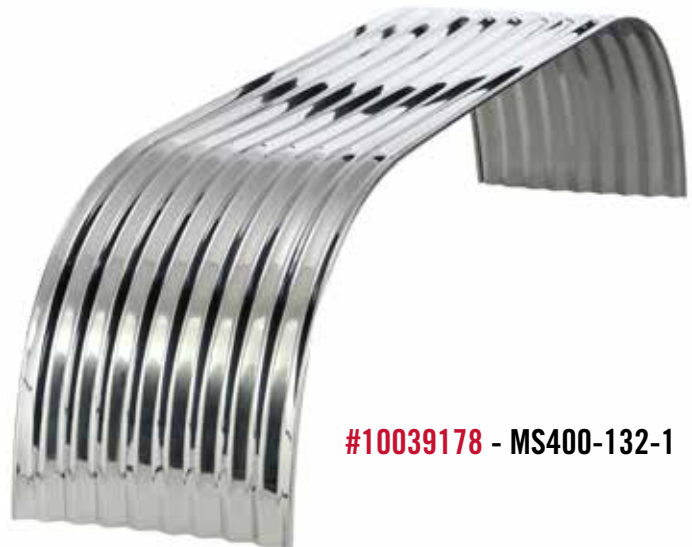
### #10039151 - MS300-66-1

<b>Material</b>	Bright 430 18 gauge stainless steel
<b>Style</b>	Corrugated
<b>Overall Length</b>	66"
<b>Front Curve</b>	39"
<b>Flat Section</b>	27"
<b>Fender Opening</b>	51"
<b>Wheel Size</b>	22.5" and 24.5"
<b>Application</b>	Dual wheels
<b>Packaging</b>	Cardboard wrapped individual fender
<b>Mounting Kits (Not Included)</b>	#10040357 -H3362US, individual fender #10040399 - K3362US, fender pair
<b>Additional Options</b>	60" and 80" overall lengths Galvanized carbon steel

## FULL TANDEM AXLE

### #10039178 - MS400-132-1

<b>Material</b>	Bright 430 18 gauge stainless steel
<b>Style</b>	Corrugated
<b>Overall Length</b>	132"
<b>Front Curve</b>	39"
<b>Rear Curve</b>	39"
<b>Flat Section</b>	54"
<b>Fender Opening</b>	105"
<b>Wheel Size</b>	22.5" and 24.5"
<b>Application</b>	Dual wheels
<b>Packaging</b>	Cardboard wrapped individual fender
<b>Mounting Kits (Not Included)</b>	#10040381 - H4362US, individual fender #10040415 - K4362US, fender pair
<b>Additional Options</b>	105", 120" and 126" overall lengths Galvanized carbon steel



#10039178 - MS400-132-1



## LOAD LOCK

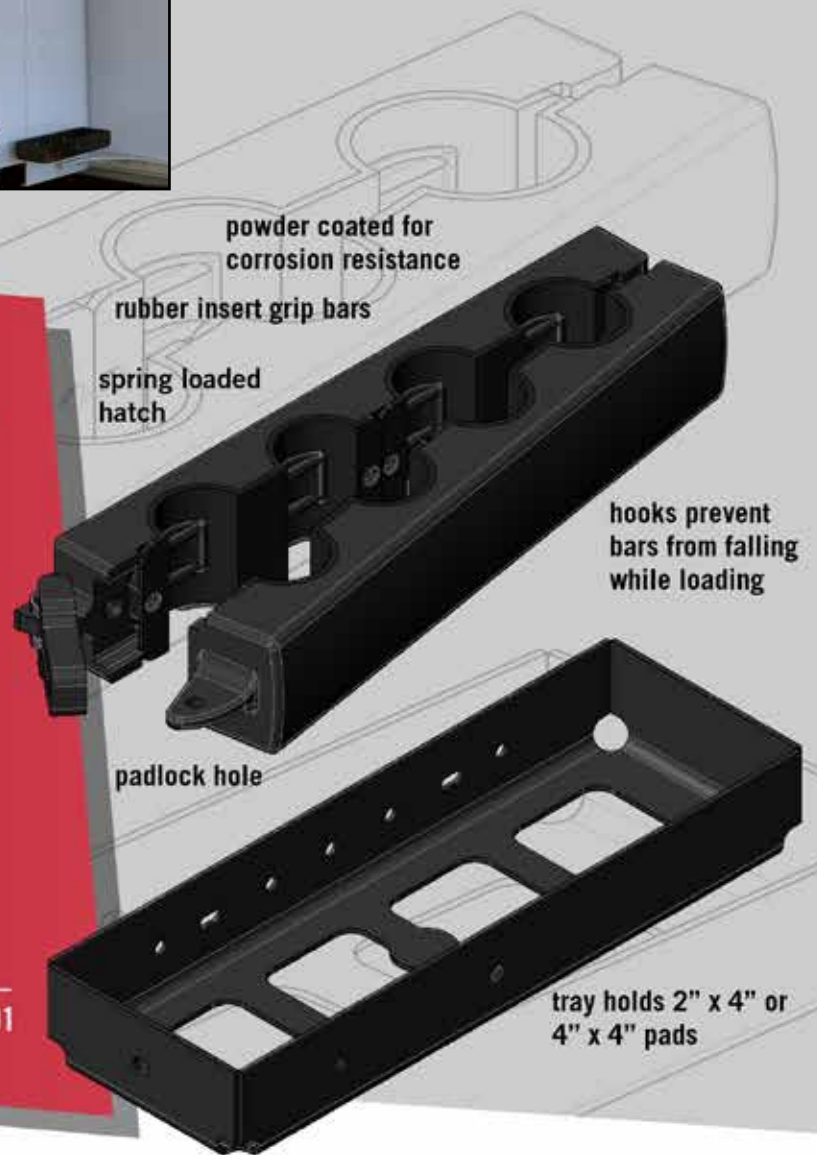
### Secure Your Load!

The Load Lock Holder is a lockable, anti-theft storage system that easily mounts nearly anywhere on your tractor to safeguard your load lock bars when not in use.

Each load lock is individually cradled to ensure no movement neither side to side, nor up and down.

Load Locks safely secure 1-1/2" and/or 1-5/8" bars and also accommodate 2" x 4" and/or 4" x 4" pads.

Item #: 100439553 Legacy Part #: LLH401



### Security

Prevent unsecure load citations. The lockable anti-theft safety system easily mounts nearly anywhere on your truck to safeguard your load locks when not in use.



### Safety

Easy to install system, prevent damage to cab fairing and quarter fenders from side-to-side conventional storage.



### Benefits

- OEM quality, heavy-duty aluminum for long life.
- Powder coated to resist corrosion.
- Hinged clamp secures load braces & eliminates the need for rubber straps.

# ACCESSORIES

## FIRE EXTINGUISHER CASES



### #10040463

<b>Style</b>	Front Loading
<b>Width</b>	11.5"
<b>Height</b>	27.25"
<b>Depth</b>	10.25"
<b>Extinguisher Size</b>	13 lb to 20 lb



### #10040430

<b>Style</b>	Top Loading
<b>Width</b>	11.25"
<b>Height</b>	20"
<b>Depth</b>	8.75"
<b>Extinguisher Size</b>	13 lb
<b>Mounting Kit</b>	#10040431



### #10040464

<b>Style</b>	Top Loading
<b>Width</b>	11"
<b>Height</b>	29"
<b>Depth</b>	12"
<b>Extinguisher Size</b>	20 lb

## DOCUMENT HOLDER

## WHEEL CHOCK & WHEEL CHOCK HOLDER



### #10040463

<b>Material</b>	Heavy Duty Poly
<b>Outer Diameter</b>	3.75"
<b>Internal Diameter</b>	3.25"



### #10040457

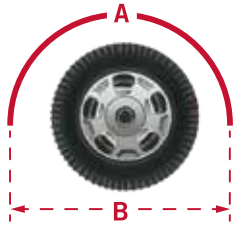
<b>Material</b>	Heavy Duty Poly
<b>Length</b>	19.75"
<b>Height</b>	11"
<b>Weight</b>	4 lbs



### #10040454

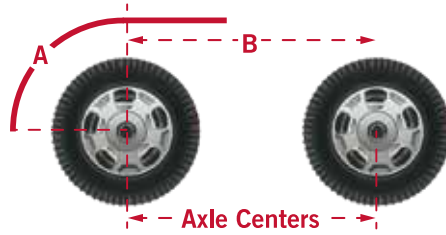
<b>Material</b>	Heavy Duty Poly
<b>Weight</b>	1.4 lbs

# FENDER MEASUREMENTS GUIDE



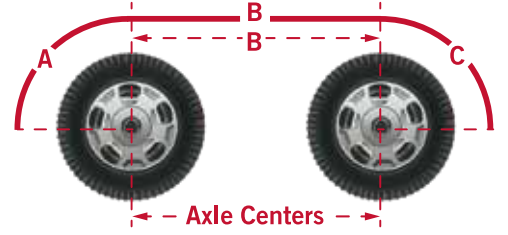
## SINGLE AXLE

**A** (Overall Length) = \_\_\_\_ in inches  
**B** (Opening) = \_\_\_\_ in inches



## HALF TANDEM

**A** (Front Curve) = \_\_\_\_ in inches  
**B** (Flat) = \_\_\_\_ in inches



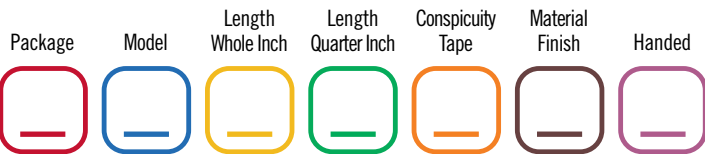
## FULL TANDEM

**A** (Front Curve) = \_\_\_\_ in inches  
**B** (Flat) = \_\_\_\_ in inches  
**C** (Rear Curve) = \_\_\_\_ in inches

# SMART™ PART NUMBERING SYSTEM

## SPRING LOADED MUD FLAP HANGERS

Use the chart below to determine the appropriate part number for your application.  
 A value from each column is required, but not all combinations are valid part numbers.



Example –

**B 67 30 25 WT B K**

**A** = Individual, Bulk  
**B** = Pair, Boxed  
**M** = Individual, Boxed

**57** = Straight, Pentroof  
1.125" Centers  
**58** = Straight, Pentroof  
2.5" Centers  
**67** = Angled, Pentroof  
1.125" Centers  
**68** = Angled, Pentroof  
2.5" Centers  
**70** = Straight, Tapered  
2.5" Centers  
**71** = Straight, Tapered  
1.125" Centers  
**80** = Straight, Miter Cut Taper  
2.5" Centers  
**81** = Straight, Miter Cut Taper  
1.125" Centers

**25** = 25 inches  
**26** = 26 inches  
**28** = 28 inches  
**30** = 30 inches  
**33** = 33 inches

**K** = Pair, Left and Right  
**R** = Right Hand  
**L** = Left Hand  
**U** = Unhanded

**B** = Black Powder Coated  
Carbon Steel  
**C** = Chrome Carbon Steel  
**S** = Stainless Steel

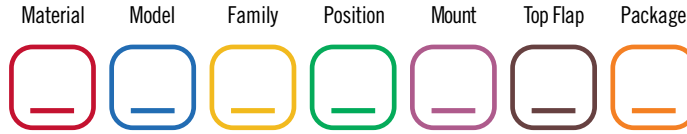
**NT** = No Conspicuity Tape  
Installed or Included  
**PT** = Conspicuity Tape  
Packaged and Included  
**RT** = Conspicuity Strip Included  
**WT** = Conspicuity Strip Installed

**0** = No incremental length  
**25** = 1/4"  
**50** = 1/2"  
**75** = 3/4"

# SMART™ PART NUMBERING SYSTEM

## QUARTER FENDERS

Use the chart below to determine the appropriate part number for your application.  
A value from each column is required, but not all combinations are valid part numbers.



**Example –**      **P**      **S**      **2**      **1**      **1**      **PA**      **2**

- A** = Aluminum, Mill Finish, .090"
- B** = Carbon Steel, E-Coat, 18 Gauge
- P** = Poly
- S** = Stainless Steel, Bright Finish, 18 Gauge
- T** = Stainless Steel, Bright Finish, 16 Gauge

- S** = Smooth

- 2** = Quarter Fender, Cradle Mount

- 1** = Standard Mount
- 2** = Low Mount
- 3** = No Mount, Undrilled
- 4** = Ultra Low Mount

- 1** = No Mount
- 2** = One Bolt Post Mount
- 5** = Four Bolt Flange Mount, Kenworth

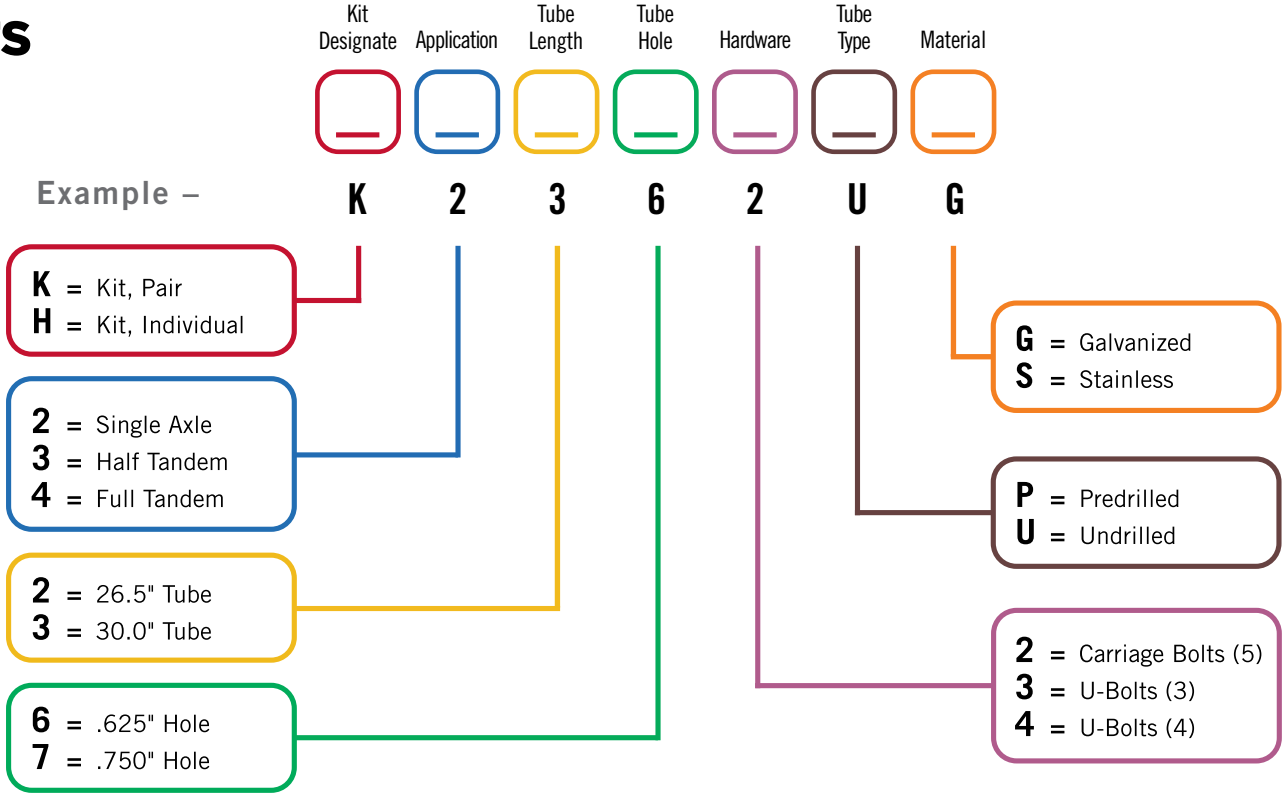
- 1** = Pair, Assembled, Top Flaps Installed
- 2** = Pair, Assembled, Top Flaps and Hardware Included
- 3** = Right Hand, Assembled, Top Flaps Installed
- 4** = Left Hand, Assembled, Top Flaps Installed
- 5** = Right Hand, Assembled, Top Flaps and Hardware Included
- 6** = Left Hand, Assembled, Top Flaps and Hardware Included
- 7** = Individual, Unassembled, Top Flap and Hardware Included
- 8** = Pair, Assembled, Top Flaps and Hardware Not Included
- 9** = Individual, Unassembled, Top Flap and Hardware Not Included

- FL** = Black Poly, White Freightliner Logo
- KW** = White Poly, Red Kenworth Logo
- NT** = Black Poly, Orange-Silver International Logo
- PA** = Black Poly, No Logo
- PU** = Black Poly, Red Peterbilt Logo
- PW** = White Poly, No Logo
- RA** = Sheet Rubber, No Logo
- VL** = White Poly, Blue Volvo Logo
- WS** = Black Poly, White-Crimson Western Star Logo

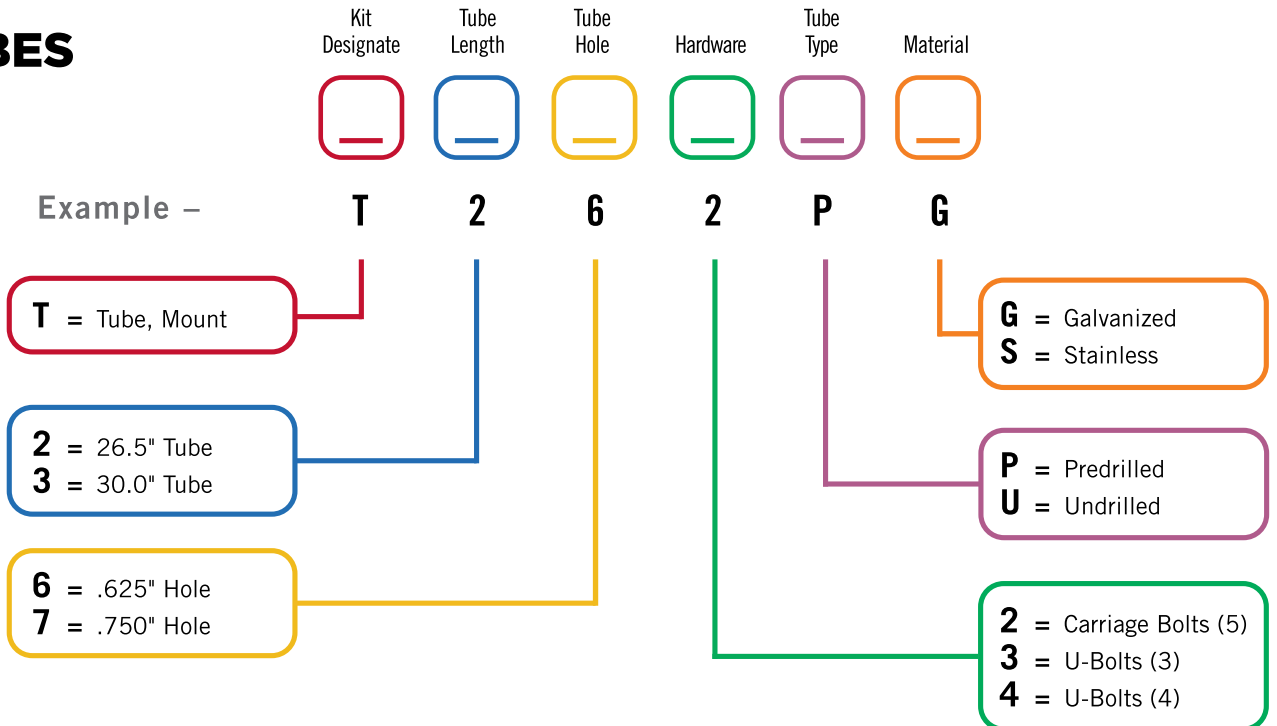
## FENDER MOUNTING KITS

Use the chart below to determine the appropriate part number for your application. A value from each column is required, but not all combinations are valid part numbers.

### KITS



### TUBES



ITEM: 10044460



A DIVISION OF **HIGH BAR BRANDS, LLC**



**HIGH BAR  
BRANDS**

**Fresno, CA & Canfield, OH**

1-559-226-9049 | [customer.support@bettshd.com](mailto:customer.support@bettshd.com)

[www.BettsHD.com](http://www.BettsHD.com) | [www.HighBarBrands.com](http://www.HighBarBrands.com)