

REFLECTIVE TAPE

The perfect addition to our safety and spray suppression lines, conspicuity tape is now available from BettsHD.



Tape products from BettsHD are compliant with DOT-C2, FMVSS-108, and NHTSA regulations.

Prismatic reflective surfaces can be seen at longer distances and higher intensities than glass bead designs.

Low-profile, single layer design provides resistance to peeling or impact from debris during use.

Polyester sheeting resists cracking over time even with a wide range of temperatures.

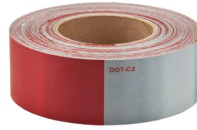
ARE YOU COVERED?

Refer to the graphics on the other side to make sure you're within regulation and ready to roll!



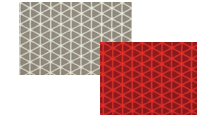
WARNING: Cancer and Reproductive Harm - www.P65Warnings.ca.gov

2" X 150' ROLL • 3-10 YEAR DURABILITY



Part#: RTR103
Color(s): 11" Red, 7" White
Durability: 3 Year

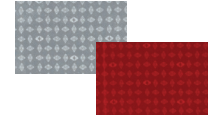
Part#: RTR203
Color(s): 6" Red, 6" White
Durability: 3 Year



Part#: RTR105
Color(s): 11" Red, 7" White
Durability: 5 Year

Part#: RTR205
Color(s): 6" Red, 6" White
Durability: 5 Year

Part#: RTR305
Color(s): White
Durability: 5 Year



Part#: RTR110
Color(s): 11" Red, 7" White
Durability: 10 Year

Part#: RTR210
Color(s): 6" Red, 6" White
Durability: 10 Year

Part#: RTR310
Color(s): White
Durability: 10 Year



BettsHD

Fresno, CA | Canfield, OH

Ph. 559.226.9049

Fax 559.441.0087

Customer.Support@BettsHD.com

Follow Us On Social Media



© 2019 BettsHD BHDPL-139

REFLECTIVE TAPE

**Replace With 2" Wide Tape (Dot-C2) Available From BettsHD.
Contact A Representative or Visit Our Website For More Details.**

FMVSS - TRAILER

UPPER REAR COVERAGE

White strips 12" long following the top and side of each door corner, similar to an upside down "L".



SIDE WALL

50% minimum coverage with evenly spaced red / white strips with the centerline no more than 60 inches above the surface of the road.

LOWER REAR COVERAGE

Continuous red/white covering 100% of the trailer width (doors) or horizontal bar surface (bumper).

FMVSS - TRACTOR

UPPER REAR CAB

White strips 12" long following the top and side of each corner, similar to an upside down "L".



LOWER REAR COVERAGE

24" minimum strips with alternating red/white on the fenders, mud flap hangers, or mud flaps (can be no more than 12" from top of flap).

