

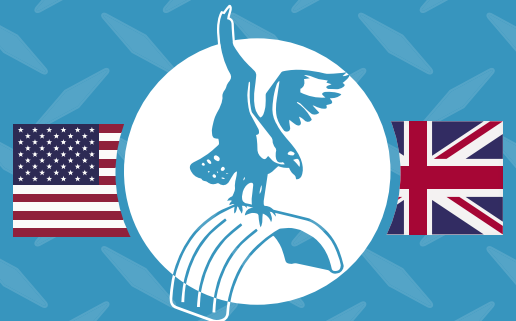


# FEATHERWING FLEET ESSENTIALS



Exclusively Distributed by BettsHD

[BettsHD.com](http://BettsHD.com)



Featherwing

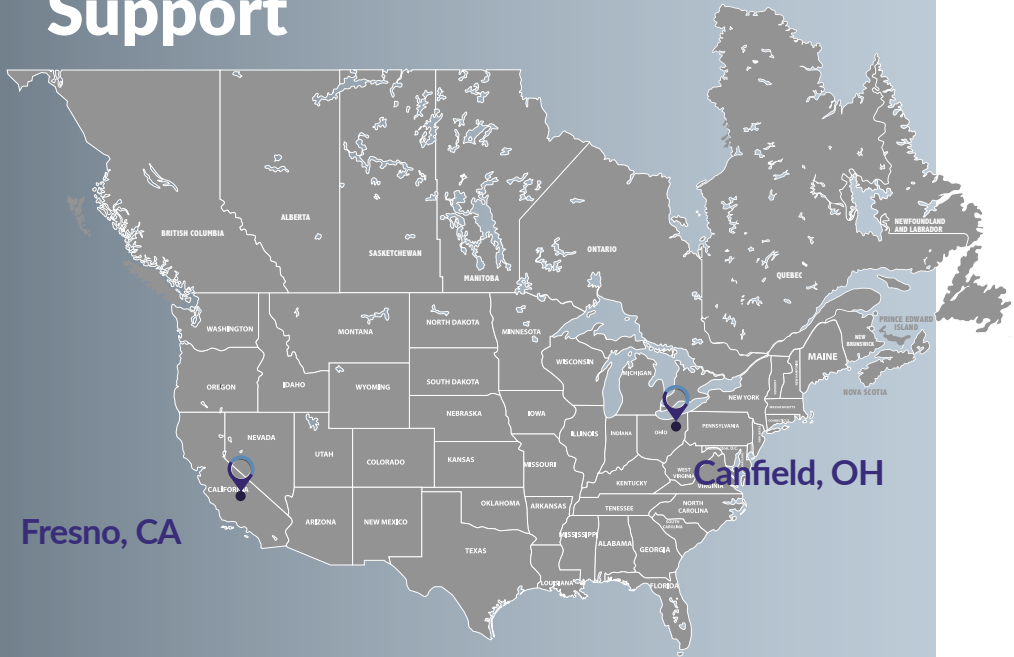
Manufactured by Boydell & Jacks  
Est. 1967



**BettsHD**  
Parts for the Long Haul®

# PARTS FOR THE LONG HAUL

## Parts, Service and Support



Two strategic manufacturing and stocking locations

### Supporting you in the marketplace and at the point of sale

BettsHD is your partner in profitability. We support the efforts of our distributors through print campaigns, POS signage, media relations and a robust website at [BettsHD.com](http://BettsHD.com).



## Ordering & Support

Contact BettsHD Customer Support for your product questions, to place an order, and to learn how to become a distributor of quality BettsHD parts.

Customer Support 559.226.9049  
8:00 AM – 8:00 PM Eastern Time  
[Customer.Support@BettsHD.com](mailto:Customer.Support@BettsHD.com)

Join Us On Social Media





Pictures taken from our archives circa 1970



# ON THE ROAD SINCE 1967...

## HERITAGE AND HISTORY

In 1967 Boydell and Jacks was the first company in the world to conceive and produce a commercial vehicle fender from thermoplastic.

*Remaining a family business for the past 53 years*, we have been at the forefront of design and innovation, gaining an enviable reputation as a company more than willing to collaborate with our customers to help achieve their objectives.

1988 saw Boydell and Jacks become the first fender manufacturing company to be accredited with the UK quality assurance standard BS 5750 and thus becoming a BSI registered company. The original accreditation was maintained and over time a system has developed into BS EN ISO 9001-2008.

Our Featherwing branded products have become synonymous with quality and reliability, and have been adopted by many OE truck manufacturers, including such companies as Volvo, Paccar, Scania and many prestigious Semi Trailer manufacturers and body builders throughout the UK, Europe and worldwide.

Featherwing branded products are being specified and fitted by prestigious companies such as Ryder, DHL, TNT, XPO Logistics and UPS.

## COMPANY VISION

Here at Boydell and Jacks, our core competence is in the high quality manufacture and distribution of the "Featherwing" range of components for the commercial vehicle industry. Our aim is to provide functional and innovative products, inspiring trust from our customers. We strive to do business with integrity and in an uncomplicated manner, delivering value and service at all times. Our staff are aware of the importance of all customers, and are empowered to embrace new technology and working practices in their pursuit to exceed expectations.

## ENVIRONMENTAL POLICY

Boydell and Jacks believe that businesses are responsible for achieving good environmental practice and operating in a sustainable manner.

We are therefore committed to reducing our environmental impact and continually improving our environmental performance as an integral and fundamental part of our business strategy and operating methods. It is our priority to encourage our customers, suppliers and all business associates to do the same. Not only is this sound commercial sense for all, it is also a matter on delivering on our duty of care towards future generations.



# FEATHERWING SPRAY SUPPRESSION TECHNOLOGY AS STANDARD... POLY QUARTER FENDERS

- Advanced integrated anti-spray system
- The **ONLY** quarter fender that channels road spray away from the tire
- Increases driver visibility and safety
- Increases other road users' safety
- Pre-drilled for easy fitment
- Unique multi positioning mounting tube fitting option
- Allowing standard, low or custom mount to your truck
- Injection molded
- Available in black or silver
- Color stabilized with UV additive for resistance to fading
- Excellent heat and cold crack properties

"The **ONLY** quarter fender to give you 'away from the tire' integrated anti-spray technology and a 'unique' integrated multi position mounting tube option."



All design rights and patents applied for.



**QF615KIT-BLACK**

**Includes:**

- 2 - Black quarter fenders with advanced integrated anti-spray
- 2 - E-coated black, 18 gauge carbon steel mounting tubes, with poly end caps fitted
- 2 - Zinc plated tube clamp
- 2 - Black poly top flap
- Zinc plated hardware
- Installation guide



**QF615KIT-SILVER**

**Includes:**

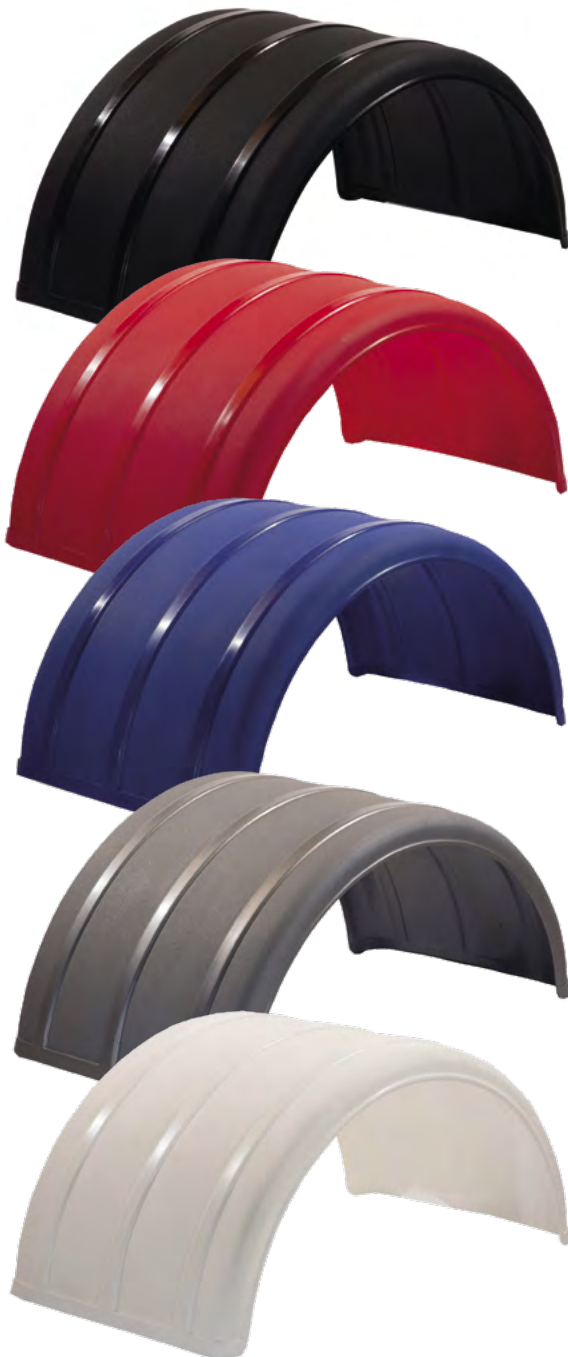
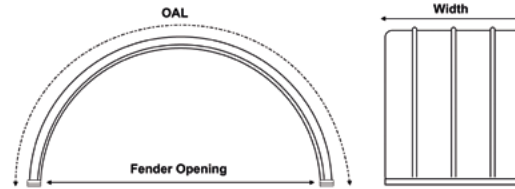
- 2 - Silver quarter fenders with advanced intergrated anti-spray
- 2 - Powder coated silver (RAL 900 ) 18 gauge carbon steel mounting tubes, with poly end caps fitted
- 2 - Zinc plated tube clamp
- 2 - Black poly top flap
- Zinc plated hardware
- Installation guide

# ON THE ROAD SINCE 1967... POLY SINGLE AXLE FENDERS

FENDERS SOLD INDIVIDUALLY  
NON BLACK FENDERS MAY HAVE EXTENDED  
LEAD TIMES



- Unique styling, advanced design
- The original fender with spray and debris reducing side valances
- Manufactured from high grade poly
- Corrosion and UV resistant
- Easy to clean and maintain
- Lightweight... less weight = less fuel



## SUPERSINGLE

PART NO.	WIDTH (W)	FENDER OPENING (FO)	OVERALL FENDER LENGTH (OAL)	COLOR
USP485	19"	47 1/4"	65"	Black

## DUAL WHEEL 19.5

PART NO.	WIDTH (W)	FENDER OPENING (FO)	OVERALL FENDER LENGTH (OAL)	COLOR
USP50530LP	21 1/2"	42 1/2"	63"	Black

## DUAL WHEEL 22.5

PART NO.	WIDTH (W)	FENDER OPENING (FO)	OVERALL FENDER LENGTH (OAL)	COLOR
USP635	25"	48"	69"	Black
USP635RED	25"	48"	69"	Red
USP635BLUE	25"	48"	69"	Blue
USP635SILVER	25"	48"	69"	Silver
USP635WHITE	25"	48"	69"	White

## DUAL WHEEL 24.5

PART NO.	WIDTH (W)	FENDER OPENING (FO)	OVERALL FENDER LENGTH (OAL)	COLOR
USP670	26 1/2"	51"	77 1/2"	Black
USP670RED	26 1/2"	51"	77 1/2"	Red
USP670BLUE	26 1/2"	51"	77 1/2"	Blue
USP670SILVER	26 1/2"	51"	77 1/2"	Silver
USP670WHITE	26 1/2"	51"	77 1/2"	White

GIVE YOUR TRUCK & FENDERS 'THE EDGE'...

*Prestige*<sup>™</sup> **FENDER STAINLESS STEEL KIT**



**SUPER SINGLE**

PART NO.	WIDTH (W)	FENDER OPENING (FO)	OVERALL FENDER LENGTH (OAL)	COLOR
USP485P	19"	47 1/4"	65"	Black

*Fenders sold individually*

**DUAL WHEEL 22.5**

PART NO.	WIDTH (W)	FENDER OPENING (FO)	OVERALL FENDER LENGTH (OAL)	COLOR
USP635P	25"	48"	69"	Black

*Fenders sold individually*

**POLY SINGLE AXLE FENDER COMPLETE WITH STAINLESS STEEL INLAY KIT**



# POLY SINGLE AXLE FENDERS MOUNTING OPTIONS

## 1 CHOOSE YOUR MOUNTING TUBES...

### FK-02



- 2 - 1 5/8" x 30" Offset single bolt stainless steel mounting tubes
- 2 - Anti slip washer
- 2 - Tube end cap (fitted)
- 2 - Stainless steel washer and nut

### FK-03



- 2 - 1 5/8" x 30" Offset single bolt black e-coat mounting tubes
- 2 - Anti slip washer
- 2 - Tube end cap (fitted)
- 2 - Zinc plated washer and nut

### FK-04-2



- 2 - 2" x 28" Black e-coat mounting tubes
- 2 - Zinc plated tube clamps
- 2 - Tube end cap (fitted)
- 6 x Back plates
- 1 x All hardware

### FK-04-4



- 4 x 2" x 28" Black e-coat mounting tubes
- 4 x Zinc plated tube clamps
- 4 x Tube end cap (fitted)
- 12 - Back plates
- 2 - All hardware

### FK-05-2



- 2 - 2" x 28" Silver powder coated mounting tubes
- 2 - Zinc plated tube clamps
- 2 - Tube end cap (fitted)
- 6 x Back plates
- 1 x All hardware

### FK-05-4



- 4 x 2" x 28" Silver e-coat mounting tubes
- 4 x Zinc plated tube clamps
- 4 x Tube end cap (fitted)
- 12 - Back plates
- 2 - All hardware

## 2 CHOOSE YOUR FIXING BRACKETS...

Fixing brackets not compatible with FK-04 / FK-05 tubes

### USUB42KIT



- 4 x 1 5/8" U bolts
- 4 x Anti slip sleeve
- 1 x All hardware
- 4 x Back plates

### IT42-4



- 4 x 1 5/8" IT brackets
- 4 x IT back plates
- 1 x All hardware

### IT42HD-4



- 4 x 1 5/8" Heavy duty IT brackets
- 4 x IT back plates
- 1 x All hardware

## 3 DON'T FORGET YOUR POLE MOUNT!

### X2900



- 1 x Single bolt post
- 8" Long
- Packaged individually

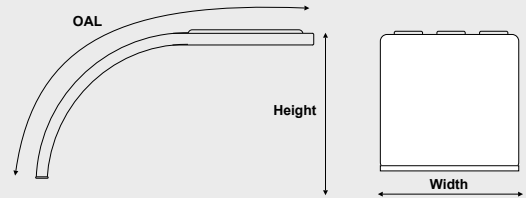
# POLY HALF TANDEM FENDERS

FENDERS SOLD INDIVIDUALLY  
NON BLACK FENDERS MAY HAVE EXTENDED  
LEAD TIMES



- Unique styling, advanced design
- The original fender with spray and debris reducing side valances
- Manufactured from high grade poly
- Corrosion and UV resistant
- Easy to clean and maintain
- Lightweight... less weight = less fuel
- Durable with "bounce back ability"
- Excellent heat and cold crack properties
- Designed for 22.5 or 24.5 Tires

PART NO.	WIDTH (W)	HEIGHT (H)	O/ALL LENGTH	COLOR
USP25HT	25"	25 1/2"	67"	Black
USP25HTRED	25"	25 1/2"	67"	Red
USP25HTBLUE	25"	25 1/2"	67"	Blue
USP25HTSILVER	25"	25 1/2"	67"	Silver
USP25HTWHITE	25"	25 1/2"	67"	White



# POLY FULL TANDEM FENDERS

- 2 Part full tandem fender
- 2 Part easy fitment
- Saves \$, no need to replace the full tandem if there is collision damage
- Unique styling, advanced design
- The original fender with spray and debris reducing side valances
- Manufactured from high grade poly
- Corrosive and UV resistant
- Easy to clean and maintain
- Lightweight... less weight = less fuel
- Durable with "bounce back ability".
- Excellent heat and cold crack properties
- Designed for 22.5 or 24.5 Tires
- USPHT-JK01 Joining Kit included



## JOINING KIT INCLUDED

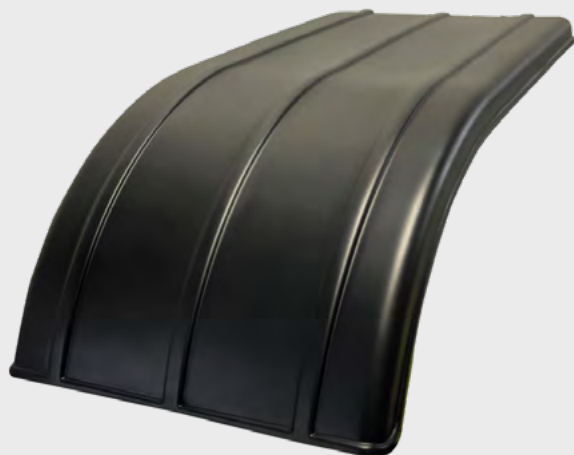
PART NO.	WIDTH (W)	HEIGHT (H)	O/ALL LENGTH	COLOR
USP25FT	25"	25 1/2"	134"	Black
USP25FTRED	25"	25 1/2"	134"	Red
USP25FTBLUE	25"	25 1/2"	134"	Blue
USP25FTSILVER	25"	25 1/2"	134"	Silver
USP25FT-WHITE	25"	25 1/2"	134"	White

GO TO PAGE 7 FOR MOUNTING OPTIONS

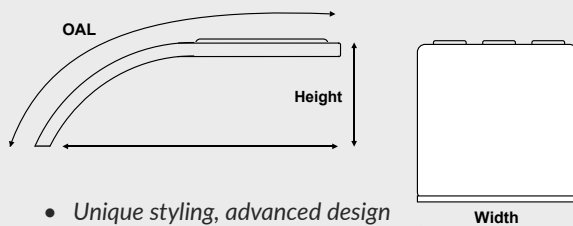


# SHORT CURVE POLY HALF TANDEM FENDERS

FENDERS SOLD INDIVIDUALLY



PART NO.	WIDTH (W)	HEIGHT (H)	O/ALL LENGTH	COLOR
USP650HT-VF	25"	16"	54 3/4"	Black



- Unique styling, advanced design
- The original fender with spray and debris reducing side valances
- Manufactured from high grade poly
- Corrosion and UV resistant
- Easy to clean and maintain
- Lightweight... less weight = less fuel
- Durable with "bounce back ability"
- Excellent heat and cold crack properties
- Designed for 22.5 or 24.5 Tires
- Fleet colors available on orders over 250 pieces

# SHORT CURVE POLY FULL TANDEM FENDERS



**JOINING KIT INCLUDED**

- 2 Part full tandem fender
- 2 Part easy fitment
- Saves \$, no need to replace the full tandem if there is collision damage
- Unique styling, advanced design
- The original fender with spray and debris reducing side valances
- Manufactured from high grade poly
- Corrosive and UV resistant
- Easy to clean and maintain
- Lightweight... less weight = less fuel
- Durable with "bounce back ability".
- Excellent heat and cold crack properties
- Designed for 22.5 or 24.5 Tires
- Fleet colors available on orders over 250 pieces
- **USPHT-JK01 Joining Kit included**

PART NO.	WIDTH (W)	HEIGHT (H)	O/ALL LENGTH	COLOR
USP650FT-VF	25"	16"	109 1/2"	Black

**GO TO PAGE 10 FOR MOUNTING OPTIONS**

# POLY HALF & FULL TANDEM FENDERS MOUNTING OPTIONS

## 1 YOU MUST HAVE POLY HALF & TANDEM END SUPPORT KIT

### HTE100



- 2 - Riser plates
- 4 x 1 5/8" clamps
- 2 - Balota anti-vibration washer
- 1 x Hardware

## 2 CHOOSE YOUR UNDER MOUNTING TUBES FOR YOUR HTE100 KIT

### FK-02



- 2 - 1 5/8" x 30" Offset single bolt stainless steel mounting tubes
- 2 - Anti slip washer
- 2 - Tube end cap (fitted)
- 2 - Stainless steel plated washer and nut

### FK-03



- 2 - 1 5/8" x 30" Offset single bolt Black e-coat mounting tubes
- 2 - Anti slip washer
- 2 - Tube end cap (fitted)
- 2 - Zinc plated washer and nut

## 3 CHOOSE YOUR FRONT MOUNTING TUBES

### FK-05-2



- 2 - 2" x 28" Silver powder coated mounting tubes
- 2 - Stainless Steel plated tube clamps
- 2 - Tube end cap (fitted)
- 6 x Back plates
- 1 x All hardware

### FK-02



- 2 - 1 5/8" x 30" Offset single bolt stainless steel mounting tubes
- 2 - Anti slip washer
- 2 - Tube end cap (fitted)
- 2 - Stainless steel plated washer and nut

### FK-04-2



- 2 - 2" x 28" Black e-coat mounting tubes
- 2 - Zinc plated tube clamps
- 2 - Tube end cap (fitted)
- 6 x Back plates
- 1 x All hardware

### FK-03



- 2 - 1 5/8" x 30" Offset single bolt black e-coat mounting tubes
- 2 - Anti slip washer
- 2 - Tube end cap (fitted)
- 2 - Zinc plated washer and nut

## 4 CHOOSE YOUR FIXING BRACKETS...

IF USING FK-02 OR FK-03 ON THE FRONT OF THE TANDEM SEE PAGE 5 FOR KIT COMPONENTS

\*Fixing brackets not compatible with FK-04 / FK-05 tubes

**DON'T FORGET YOUR POLE MOUNT!**

### X2900



- 1 x Single bolt post
- 8" Long
- Packaged individually

### USUB42KIT



### IT42-4



### IT42HD-4



# TOTAL INSTALLATION KITS

COMPLETE KITS - INCLUDES FENDERS, BRACKETS AND ALL HARDWARE

## HTE100



**Center Bracket Support Kit**  
(For half and full tandem only)

- 2 - Riser plates
- 4 x 1 5/8" clamps
- 2 - Balota anti-vibration washer
- 1 x Hardware

## IT42HD-4



**Fender Bracket Mounting Kit**

- 4 x 1 5/8" Heavy duty IT brackets
- 4 x IT back plates
- 1 x All hardware

### Offset Bracket options (Single axle, half and full tandems)

## FK-02



- 2 - 1 5/8" x 30" Offset single bolt stainless steel mounting tubes
- 2 - Anti slip washer
- 2 - Tube end cap (fitted)
- 2 - Stainless steel washer and nut

## FK-03



- 2 - 1 5/8" x 30" Offset single bolt black e-coat mounting tubes
- 2 - Anti slip washer
- 2 - Tube end cap (fitted)
- 2 - Zinc plated washer and nut



## SINGLE AXLE FENDERS

22.5 Tires - TIK635-03

24.5 Tires - TIK670-03

TIK635-03	TIK670-03
(2) - USP635	(2) - USP670
(2) - FK-03	(2) - FK-03
(2) - IT42HD-4	(2) - IT42HD-4



## HALF TANDEM FENDERS

TIK25HT-03

BLACK PAINTED	
(2) - USP25HT	(1) - HTE-100
(2) - FK-03	(1) - IT42HD-4



## FULL TANDEM FENDERS

TIK25FT-03

BLACK PAINTED	
(4) - USP25HT	(1) - HTE-100
(3) - FK-03	(2) - IT42HD-4
(2) - USPHT-JK01	

# MID LIFT AXLE FENDERS

FENDERS SOLD INDIVIDUALLY

## POLY MID LIFT AXLE FENDERS



- Designed especially for 255/70R 22.5 mid lift axle Tires
- Unique styling, advanced design
- The original fender with spray and debris reducing side valances
- Manufactured from high grade poly
- Corrosion and UV resistant
- Easy to clean and maintain
- Lightweight... less weight = less fuel
- Durable with "bounce back ability"
- Excellent heat and cold crack properties
- Fleet colors on volume request

PART NO.	WIDTH (W)	FENDER OPENING (FO)	OVERALL FENDER LENGTH (OAL)	COLOR
USP320	12 1/2"	42"	60 1/2"	Black

## POLISHED ALUMINUM MID LIFT AXLE FENDERS

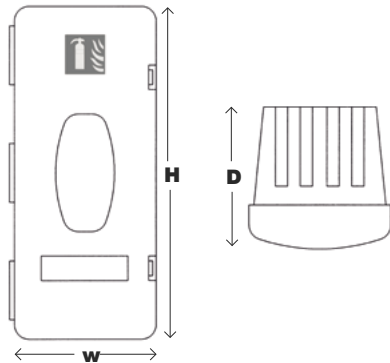


- Designed especially for 255/70R 22.5 mid lift axle Tires
- The original Fender with spray and debris reducing side valances
- Manufactured from High Grade Polished Aluminum
- Fully wired edges for stability
- Easy to clean and maintain
- Lightweight... less weight = less fuel

PART NO.	WIDTH (W)	FENDER OPENING (FO)	OVERALL FENDER LENGTH (OAL)	COLOR
PA320	12 1/2"	42"	60 1/2"	Polished Aluminum

# FRONT LOADING FIRE EXTINGUISHER CASES

- All plastic construction, non-corrosive
- Lightweight
- Viewing window
- Internal extinguisher strap
- Suitable for most 13 lb and 20 lb extinguishers



BJB-RB155 Truck Mounted



**BJB-RB155**

Part No.	Width (W)	Height (H)	Depth (D)	Description
BJB-RB155	11 1/2"	27 1/4"	10 1/4"	Front loading extinguisher box including internal strap and viewing window suitable for most extinguishers up to 20 lb

## TOP LOADING FIRE EXTINGUISHER CASE 13 lb

- Designed specifically to hold up to 13 lb fire extinguisher
- Ideal for general fitment, or when space is at a premium
- Suitable for surface mounting or under hanging fitment
- Quick release lid which falls clear of the box for fast access
- High grade poly
- Lightweight construction, good chemical and impact resistance, fitted with waterproof seal
- Universal fitting kit



**BJB231**



**BJB231FIX**

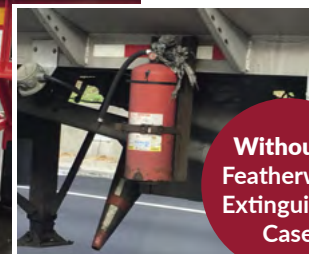
Part No.	Width (W)	Height (H)	Depth (D)	Description
BJB231	11 1/4"	20"	8 3/4"	Extinguisher case – suits FE-PD6G 13 lb fire extinguisher.
BJB231FIX	-	-	-	Fitting kit

Protect your extinguisher,  
Protect your investment.

With a  
Featherwing  
Extinguisher  
Case



Without a  
Featherwing  
Extinguisher  
Case



# UNIVERSAL ACCESSORIES

## DOCUMENT HOLDER

- Designed for extreme duty
- Fully recyclable
- Water resistant seal
- Easy fit moulded mounting system
- Lightweight - manufactured from high grade poly
- High chemical and impact resistance
- Secure screw lid fastening system

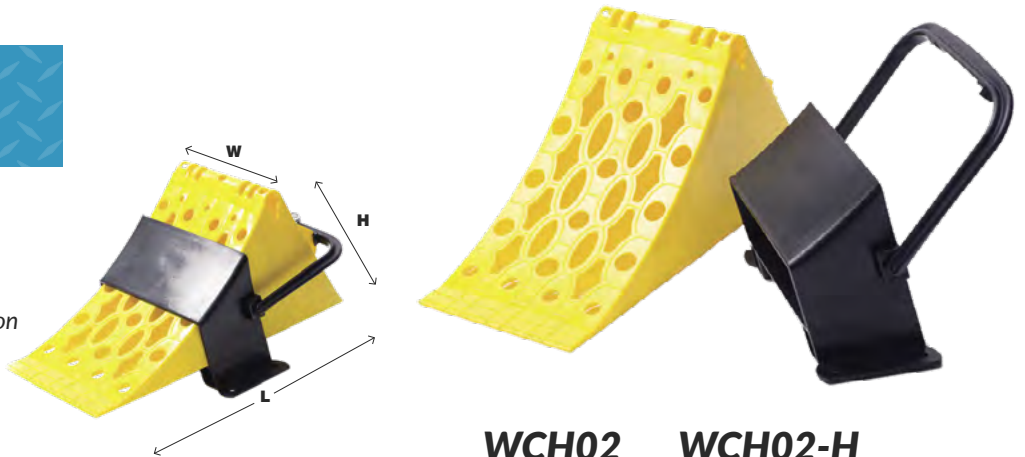
**DOC103**



Part No.	Length (L)	Outer Dia' (OD)	Internal Dia' (ID)	Color
DOC103	12 1/2"	3 3/4"	3 1/4"	Black

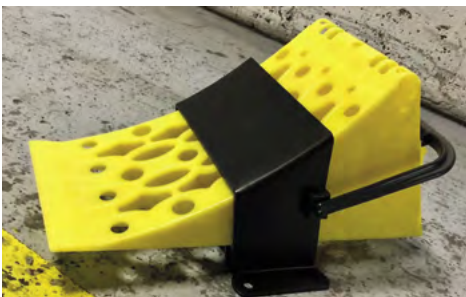
## WHEEL CHOCK

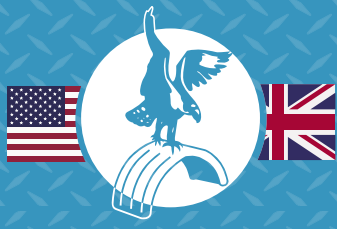
- Conforms to DIN-76051-53
- Tested to +125°F / -40°F
- Heavy duty high grade poly construction
- Corrosion resistant poly holder
- Integrated 'bite bar' on bottom



**WCH02 WCH02-H**

Part No.	Length	Height	Width	Weight	Description
WCH02	19 3/4"	11"	8"	4lb	Wheel chock
WCH02-H	-	-	-	1.4lb	Holder





Featherwing

Manufactured by Boydell & Jacks  
Est. 1967

*The Original Fender Crush Test*

**Featherwing fenders are tough,  
and always have been since 1967.**

## HOW TOUGH?

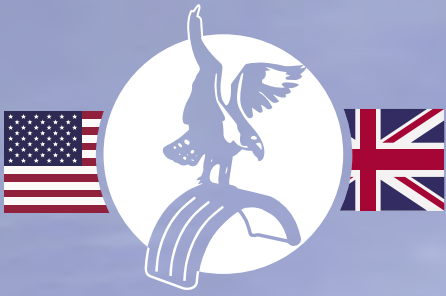
The photos below are taken from our very first catalogue in 1968. They show company founder, Mr Ray Jacks, and Engineer, Mr Tom Kennedy, inspecting an early Featherwing Poly Fender, after a very basic, but 'stylish test'.

Rest assured, with Featherwing fenders you have over 53 years of heritage, expertise and knowhow in every Fender we produce. You can't get that from anywhere else!



**TOUGH IN 1967, STILL TOUGH  
53 YEARS LATER...**





# Featherwing

Manufactured by Boydell & Jacks  
Est. 1967



**Exclusively distributed in the United States by BettsHD.**

## BettsHD

Fresno, CA | Canfield, OH

Ph. 559.226.9049

Fax 559.441.0087

Customer.Support@BettsHD.com

**NACAT**  
0419



Certificate No. Q05804  
Boydell and Jacks Ltd Quality Control  
Procedures conform to  
BS EN ISO 9001:2008